

## PRC1 (Phospho-Thr470) Antibody

Catalog No: #12694



Package Size: #12694-1 50ul #12694-2 100ul

Orders: [order@signalwayantibody.com](mailto:order@signalwayantibody.com)Support: [tech@signalwayantibody.com](mailto:tech@signalwayantibody.com)

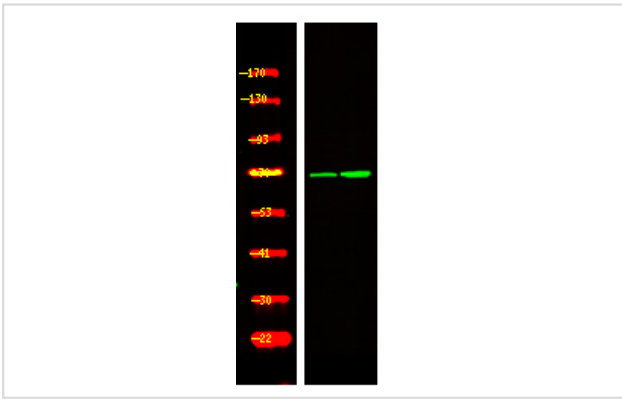
## Description

Product Name	PRC1 (Phospho-Thr470) Antibody
Host Species	Rabbit
Clonality	Polyclonal
Purification	Antibodies were produced by immunizing rabbits with synthetic phosphopeptide and KLH conjugates. Antibodies were purified by affinity-chromatography using epitope-specific phosphopeptide. Non-phospho specific antibodies were removed by chromatography using non-phosphopeptide.
Applications	WB
Species Reactivity	Hu Ms
Specificity	PRC1 (Phospho-Thr470) Antibody detects endogenous levels of PRC1 only when phosphorylated at Thr470
Immunogen Type	Peptide
Immunogen Description	A synthesized peptide derived from human PRC1 (Phospho-Thr470)
Target Name	PRC1
Modification	Phospho
Other Names	PRC1, ASE1
Accession No.	Swiss-Prot#: O43663NCBI Gene ID: 9055
Uniprot	O43663
GeneID	9055;
Target Species	human
Calculated MW	72kd
Concentration	1.0mg/ml
Formulation	Rabbit IgG in phosphate buffered saline (without Mg <sup>2+</sup> and Ca <sup>2+</sup> ), pH 7.4, 150mM NaCl, 0.02% sodium azide and 50% glycerol.
Storage	Store at -20°C

## Application Details

Western blotting: 1:1000

## Images



Western Blot analysis of lysates of Raji cell (Left) and Raji cell Serum-free treated (Right), using primary antibody at 1:1000 dilution.

---

Note: This product is for in vitro research use only