

## RBL2 (Phospho-Ser639) Antibody

Catalog No: #12697



Package Size: #12697-1 50ul #12697-2 100ul

Orders: [order@signalwayantibody.com](mailto:order@signalwayantibody.com)Support: [tech@signalwayantibody.com](mailto:tech@signalwayantibody.com)

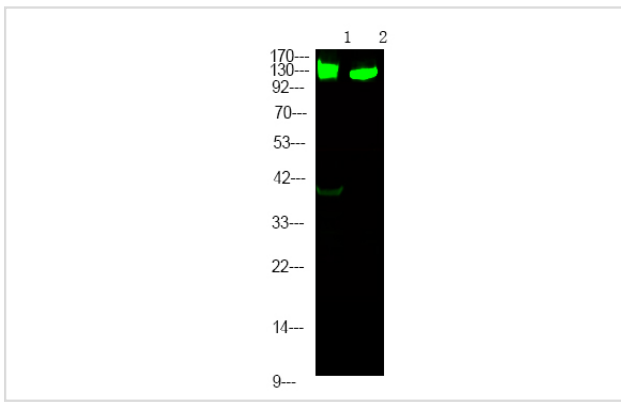
## Description

Product Name	RBL2 (Phospho-Ser639) Antibody
Host Species	Rabbit
Clonality	Polyclonal
Purification	Antibodies were produced by immunizing rabbits with synthetic phosphopeptide and KLH conjugates. Antibodies were purified by affinity-chromatography using epitope-specific phosphopeptide. Non-phospho specific antibodies were removed by chromatography using non-phosphopeptide.
Applications	WB
Species Reactivity	Hu Ms Rt
Specificity	RBL2 (Phospho-Ser639) Antibody detects endogenous levels of RBL2 only when phosphorylated at Ser639
Immunogen Type	Peptide
Immunogen Description	A synthesized peptide derived from human RBL2 (Phospho-Ser639)
Target Name	RBL2
Modification	Phospho
Other Names	RBL2, p130, Retinoblastoma-like 2 (p130), RBR-2, Rb2, Retinoblastoma-like protein 2
Accession No.	Swiss-Prot#: Q08999NCBI Gene ID: 5934
Uniprot	Q08999
GeneID	5934;
Target Species	human
Calculated MW	128kd
Concentration	1.0mg/ml
Formulation	Rabbit IgG in phosphate buffered saline (without Mg <sup>2+</sup> and Ca <sup>2+</sup> ), pH 7.4, 150mM NaCl, 0.02% sodium azide and 50% glycerol.
Storage	Store at -20°C

## Application Details

Western blotting: 1:1000

## Images



Western Blot analysis of lysates of 1. Hela cell Serum-free treated and 2. Hela cell, using primary antibody at 1:1000 dilution.

---

Note: This product is for in vitro research use only