

## SHC1 (Phospho-Tyr349+Tyr350) Antibody

Catalog No: #12698



Package Size: #12698-1 50ul #12698-2 100ul

Orders: [order@signalwayantibody.com](mailto:order@signalwayantibody.com)Support: [tech@signalwayantibody.com](mailto:tech@signalwayantibody.com)

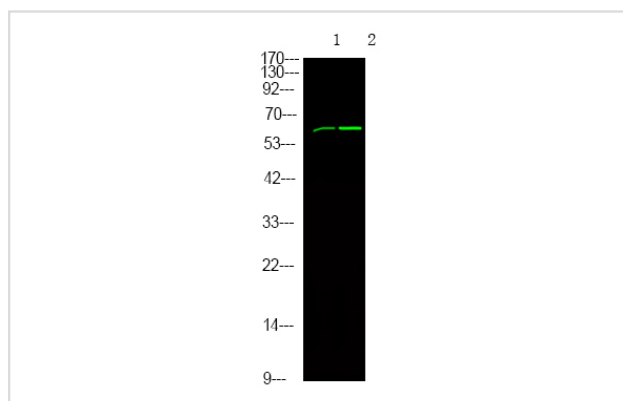
## Description

Product Name	SHC1 (Phospho-Tyr349+Tyr350) Antibody
Host Species	Rabbit
Clonality	Polyclonal
Purification	Antibodies were produced by immunizing rabbits with synthetic phosphopeptide and KLH conjugates. Antibodies were purified by affinity-chromatography using epitope-specific phosphopeptide. Non-phospho specific antibodies were removed by chromatography using non-phosphopeptide.
Applications	WB
Species Reactivity	Hu Ms Rt
Specificity	SHC1 (Phospho-Tyr349+Tyr350) Antibody detects endogenous levels of SHC1 only when phosphorylated at Tyr349+Tyr350
Immunogen Type	Peptide
Immunogen Description	A synthesized peptide derived from human SHC1 (Phospho-Tyr349+Tyr350)
Target Name	SHC1
Modification	Phospho
Other Names	SHC1, p46 shc, p52 shc, SH2 domain protein C1, p66, SHCA, SHC, SHC-transforming protein 1, SHC-transforming protein 3, SHC-transforming protein A
Accession No.	Swiss-Prot#: P29353NCBI Gene ID: 6464
Uniprot	P29353
GeneID	6464;
Target Species	human
Calculated MW	70kd
Concentration	1.0mg/ml
Formulation	Liquid in PBS containing 50% glycerol, and 0.02% sodium azide.
Storage	Store at -20°C

## Application Details

Western blotting: 1:1000

## Images



Western Blot analysis of lysates of 1. MCF-7 cell and 2. MCF-7 cell Serum-free treated, using primary antibody at 1:1000 dilution.

Note: This product is for in vitro research use only