

## CD45 (Phospho-Tyr1216) Antibody

Catalog No: #12702

Package Size: #12702-1 50ul #12702-2 100ul

Orders: [order@signalwayantibody.com](mailto:order@signalwayantibody.com)Support: [tech@signalwayantibody.com](mailto:tech@signalwayantibody.com)

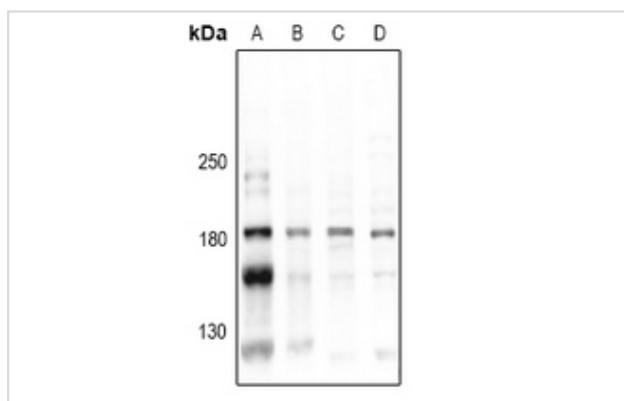
## Description

Product Name	CD45 (Phospho-Tyr1216) Antibody
Host Species	Rabbit
Clonality	Polyclonal
Purification	Antibodies were produced by immunizing rabbits with synthetic phosphopeptide and KLH conjugates. Antibodies were purified by affinity-chromatography using epitope-specific phosphopeptide. Non-phospho specific antibodies were removed by chromatography using non-phosphopeptide.
Applications	WB
Species Reactivity	Hu
Specificity	CD45 (Phospho-Tyr1216) Antibody detects endogenous levels of CD45 only when phosphorylated at Tyr1216
Immunogen Type	Peptide
Immunogen Description	A synthesized peptide derived from human CD45 (Phospho-Tyr1216)
Target Name	CD45
Modification	Phospho
Other Names	PTPRC, B220, CD45R, CD45, gp180, Leukocyte common antigen, L-CA, Leucocyte common antigen, LY5, T200, T200 glycoprotein, T200 leukocyte common antigen, CD45 antigen, LCA
Accession No.	Swiss-Prot#: P08575NCBI Gene ID: 5788
Uniprot	P08575
GeneID	5788;
Target Species	human
Calculated MW	150kd
Concentration	1.0mg/ml
Formulation	Liquid in 0.42% Potassium phosphate, 0.87% Sodium chloride, pH 7.3, 30% glycerol, and 0.01% sodium azide.
Storage	Store at -20°C

## Application Details

WB (1/500 - 1/1000)

## Images



Western blot analysis of CD45 (pY1216) expression in HEK293T (A), MCF7 (B), PC12 (C), AML12 (D) whole cell lysates.

---

Note: This product is for in vitro research use only