

DDR1 (Phospho-Tyr796) Antibody

Catalog No: #12708

Package Size: #12708-1 50ul #12708-2 100ul

Orders: order@signalwayantibody.comSupport: tech@signalwayantibody.com

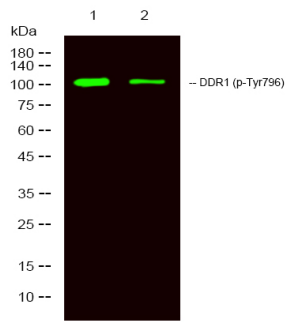
Description

Product Name	DDR1 (Phospho-Tyr796) Antibody
Host Species	Rabbit
Clonality	Polyclonal
Purification	Antibodies were produced by immunizing rabbits with synthetic phosphopeptide and KLH conjugates. Antibodies were purified by affinity-chromatography using epitope-specific phosphopeptide. Non-phospho specific antibodies were removed by chromatography using non-phosphopeptide.
Applications	WB
Species Reactivity	Hu Ms Rt
Specificity	DDR1 (Phospho-Tyr796) Antibody detects endogenous levels of DDR1 only when phosphorylated at Tyr796
Immunogen Type	Peptide
Immunogen Description	A synthesized peptide derived from human DDR1 (Phospho-Tyr796)
Target Name	DDR1
Modification	Phospho
Other Names	DDR1, Cell adhesion kinase, CD167, CD167a antigen, EDDR1, ENTRK4, Mammary carcinoma kinase 10, MCK10, NEP, PTK3, PTK3A, RTK6, Tyrosine-protein kinase CAK, CAK, DDR, Discoidin domain receptor 1, HGK2, MCK-10, NTRK4, Protein-tyrosine kinase 3A, Protein ...
Accession No.	Swiss-Prot#: Q08345NCBI Gene ID: 780
Uniprot	Q08345
GeneID	780;
Target Species	human
Calculated MW	110kd
Concentration	1.0mg/ml
Formulation	Liquid in PBS containing 50% glycerol, 0.5% BSA and 0.02% sodium azide.
Storage	Store at -20°C

Application Details

Western blotting: 1:1000

Images



Western Blot analysis of lysates of 1. HeLa cell and 2. HeLa cell treated with 100ng/mL LPS for 20min, using primary antibody at 1:1000 dilution.

Note: This product is for in vitro research use only