

EPHA6 (Phospho-Tyr977) Antibody

Catalog No: #12715



Package Size: #12715-1 50ul #12715-2 100ul

Orders: order@signalwayantibody.comSupport: tech@signalwayantibody.com

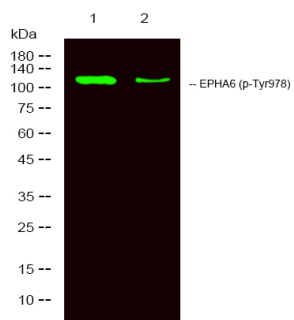
Description

Product Name	EPHA6 (Phospho-Tyr977) Antibody
Host Species	Rabbit
Clonality	Polyclonal
Purification	Antibodies were produced by immunizing rabbits with synthetic phosphopeptide and KLH conjugates. Antibodies were purified by affinity-chromatography using epitope-specific phosphopeptide. Non-phospho specific antibodies were removed by chromatography using non-phosphopeptide.
Applications	WB
Species Reactivity	Hu Ms Rt
Specificity	EPHA6 (Phospho-Tyr977) Antibody detects endogenous levels of EPHA6 only when phosphorylated at Tyr977
Immunogen Type	Peptide
Immunogen Description	A synthesized peptide derived from human EPHA6 (Phospho-Tyr977)
Target Name	EPHA6
Modification	Phospho
Other Names	EPHA6, Ephrin receptor EphA6, EPA6, EPH-like kinase 12, EHK2, Ek1, Ephrin type-A receptor 6, EHK-2, EK12, EPH homology kinase 2, EPH receptor A6, HEK12, PRO57066
Accession No.	Swiss-Prot#: Q9UF33NCBI Gene ID: 285220
Uniprot	Q9UF33
GeneID	285220;
Target Species	human
Calculated MW	116kd
Concentration	1.0mg/ml
Formulation	Rabbit IgG in phosphate buffered saline (without Mg ²⁺ and Ca ²⁺), pH 7.4, 150mM NaCl, 0.02% sodium azide and 50% glycerol.
Storage	Store at -20°C

Application Details

Western blotting: 1:1000

Images



Western Blot analysis of lysates of 1. HeLa and 2. HeLa treated with 100ng/mL LPS for 20min, using primary antibody at 1:1000 dilution.

Note: This product is for in vitro research use only