

EPHA7 (Phospho-Tyr608) Antibody

Catalog No: #12716



Package Size: #12716-1 50ul #12716-2 100ul

Orders: order@signalwayantibody.comSupport: tech@signalwayantibody.com

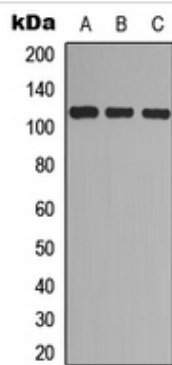
Description

Product Name	EPHA7 (Phospho-Tyr608) Antibody
Host Species	Rabbit
Clonality	Polyclonal
Purification	Antibodies were produced by immunizing rabbits with synthetic phosphopeptide and KLH conjugates. Antibodies were purified by affinity-chromatography using epitope-specific phosphopeptide. Non-phospho specific antibodies were removed by chromatography using non-phosphopeptide.
Applications	WB
Species Reactivity	Hu Ms Rt
Specificity	EPHA7 (Phospho-Tyr608) Antibody detects endogenous levels of EPHA7 only when phosphorylated at Tyr608
Immunogen Type	Peptide
Immunogen Description	A synthesized peptide derived from human EPHA7 (Phospho-Tyr608)
Target Name	EPHA7
Modification	Phospho
Other Names	EPHA7, EHK-3, EK11, EPH homology kinase 3, Eph homology kinase-3, EPH receptor A7, EHK3, Ephrin type-A receptor 7, MDK1, Ebk, EPH-like kinase 11, HEK11
Accession No.	Swiss-Prot#: Q15375NCBI Gene ID: 2045
Uniprot	Q15375
GeneID	2045;
Target Species	human
Calculated MW	112kd
Concentration	1.0mg/ml
Formulation	Liquid in 0.42% Potassium phosphate, 0.87% Sodium chloride, pH 7.3, 30% glycerol, and 0.01% sodium azide.
Storage	Store at -20°C

Application Details

WB (1/500 - 1/1000)

Images



Western blot analysis of EPHA7 (pY608) expression in A549 (A), NS-1 (B), PC12 (C) whole cell lysates.

Note: This product is for in vitro research use only