

EPHB3 (Phospho-Tyr608) Antibody

Catalog No: #12719

Package Size: #12719-1 50ul #12719-2 100ul

Orders: order@signalwayantibody.comSupport: tech@signalwayantibody.com

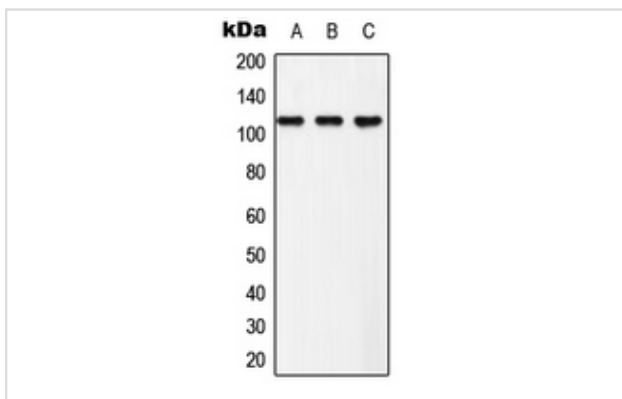
Description

Product Name	EPHB3 (Phospho-Tyr608) Antibody
Host Species	Rabbit
Clonality	Polyclonal
Purification	Antibodies were produced by immunizing rabbits with synthetic phosphopeptide and KLH conjugates. Antibodies were purified by affinity-chromatography using epitope-specific phosphopeptide. Non-phospho specific antibodies were removed by chromatography using non-phosphopeptide.
Applications	WB
Species Reactivity	Hu Ms
Specificity	EPHB3 (Phospho-Tyr608) Antibody detects endogenous levels of EPHB3 only when phosphorylated at Tyr608
Immunogen Type	Peptide
Immunogen Description	A synthesized peptide derived from human EPHB3 (Phospho-Tyr608)
Target Name	EPHB3
Modification	Phospho
Other Names	EPHB3, Cek10, ETK2, HEK2 protein kinase, Embryonic kinase 2, EPH receptor B3, EPH-like kinase 2, Ephrin type-B receptor 3, MDK5, Sek4, TYRO6, EK2, EPH-like tyrosine kinase 2, EPH-like tyrosine kinase-2, HEK2, Human embryo kinase 2, Tyrosine-protein k ...
Accession No.	Swiss-Prot#: P54753NCBI Gene ID: 2049
Uniprot	P54753
GeneID	2049;
Target Species	human
Calculated MW	110kd
Concentration	1.0mg/ml
Formulation	Liquid in 0.42% Potassium phosphate, 0.87% Sodium chloride, pH 7.3, 30% glycerol, and 0.01% sodium azide.
Storage	Store at -20°C

Application Details

WB (1/500 - 1/1000)

Images



Western blot analysis of EPHB3 (pY608) expression in HeLa (A), NIH3T3 (B), PC12 (C) whole cell lysates.

Note: This product is for in vitro research use only