

HER4 (Phospho-Tyr1242) Antibody

Catalog No: #12727

Package Size: #12727-1 50ul #12727-2 100ul

Orders: order@signalwayantibody.com

Support: tech@signalwayantibody.com

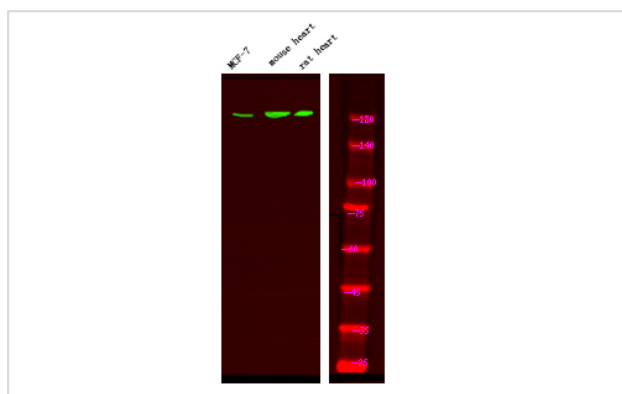
Description

Product Name	HER4 (Phospho-Tyr1242) Antibody
Host Species	Rabbit
Clonality	Polyclonal
Purification	Antibodies were produced by immunizing rabbits with synthetic phosphopeptide and KLH conjugates. Antibodies were purified by affinity-chromatography using epitope-specific phosphopeptide. Non-phospho specific antibodies were removed by chromatography using non-phosphopeptide.
Applications	WB
Species Reactivity	Hu Ms Rt
Specificity	HER4 (Phospho-Tyr1242) Antibody detects endogenous levels of HER4 only when phosphorylated at Tyr1242
Immunogen Type	Peptide
Immunogen Description	A synthesized peptide derived from human HER4 (Phospho-Tyr1242)
Target Name	HER4
Modification	Phospho
Other Names	ERBB4, ERBB 4, HER4, p180 erb4, p180erbB4
Accession No.	Swiss-Prot#: Q15303NCBI Gene ID: 2066
Uniprot	Q15303
GeneID	2066;
Target Species	human
Calculated MW	180kd
Concentration	1.0mg/ml
Formulation	Liquid in PBS containing 50% glycerol, and 0.02% sodium azide.
Storage	Store at -20°C

Application Details

Western blotting: 1:1000

Images



Western Blot analysis of lysates of MCF-7 cell, mouse heart and rat heart, using primary antibody at 1:1000 dilution.

Note: This product is for in vitro research use only