

LAT (Phospho-Tyr255) Antibody

Catalog No: #12728



Package Size: #12728-1 50ul #12728-2 100ul

Orders: order@signalwayantibody.comSupport: tech@signalwayantibody.com

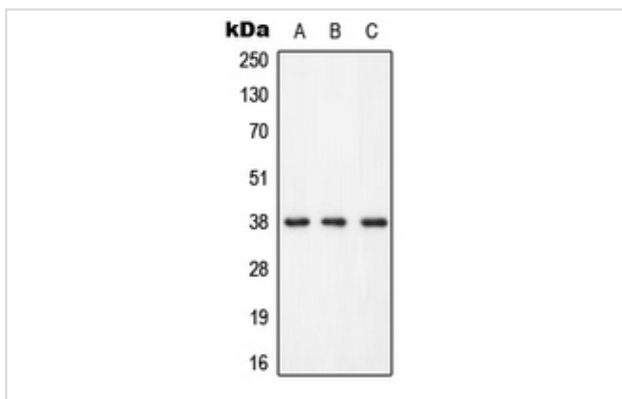
Description

Product Name	LAT (Phospho-Tyr255) Antibody
Host Species	Rabbit
Clonality	Polyclonal
Purification	Antibodies were produced by immunizing rabbits with synthetic phosphopeptide and KLH conjugates. Antibodies were purified by affinity-chromatography using epitope-specific phosphopeptide. Non-phospho specific antibodies were removed by chromatography using non-phosphopeptide.
Applications	WB
Species Reactivity	Hu Ms Rt
Specificity	LAT (Phospho-Tyr255) Antibody detects endogenous levels of LAT only when phosphorylated at Tyr255
Immunogen Type	Peptide
Immunogen Description	A synthesized peptide derived from human LAT (Phospho-Tyr255)
Target Name	LAT
Modification	Phospho
Other Names	LAT, p36-38, Pp36, LAT1
Accession No.	Swiss-Prot#: O43561NCBI Gene ID: 27040
Uniprot	O43561
GeneID	27040;
Target Species	human
Calculated MW	28kd
Concentration	1.0mg/ml
Formulation	Liquid in 0.42% Potassium phosphate, 0.87% Sodium chloride, pH 7.3, 30% glycerol, and 0.01% sodium azide.
Storage	Store at -20°C

Application Details

WB (1/500 - 1/1000)

Images



Western blot analysis of LAT (pY255) expression in HEK293T (A), Raw264.7 (B), H9C2 (C) whole cell lysates.

Note: This product is for in vitro research use only