

Met (Phospho-Tyr1313) Antibody

Catalog No: #12730

Package Size: #12730-1 50ul #12730-2 100ul

Orders: order@signalwayantibody.comSupport: tech@signalwayantibody.com

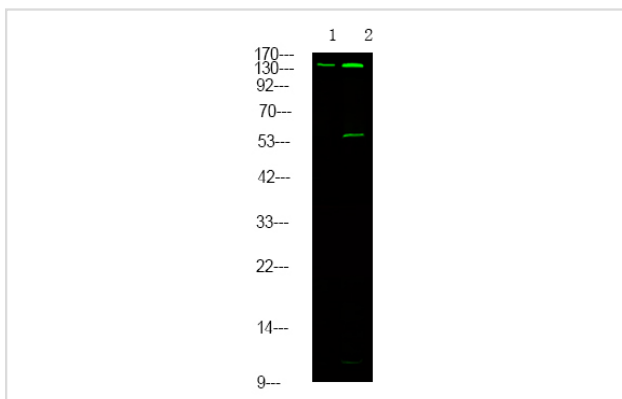
Description

Product Name	Met (Phospho-Tyr1313) Antibody
Host Species	Rabbit
Clonality	Polyclonal
Purification	Antibodies were produced by immunizing rabbits with synthetic phosphopeptide and KLH conjugates. Antibodies were purified by affinity-chromatography using epitope-specific phosphopeptide. Non-phospho specific antibodies were removed by chromatography using non-phosphopeptide.
Applications	WB
Species Reactivity	Hu Ms Rt
Specificity	Met (Phospho-Tyr1313) Antibody detects endogenous levels of Met only when phosphorylated at Tyr1313
Immunogen Type	Peptide
Immunogen Description	A synthesized peptide derived from human Met (Phospho-Tyr1313)
Target Name	Met
Modification	Phospho
Other Names	MET, AUTS9, C-Met, HGF/SF receptor, HGFR, Met kinase, Proto-oncogene c-Met, Scatter factor receptor, SF receptor, HGF receptor, RCCP2, Tyrosine-protein kinase Met
Accession No.	Swiss-Prot#: P08581NCBI Gene ID: 4233
Uniprot	P08581
GeneID	4233;
Target Species	human
Calculated MW	155kd
Concentration	1.0mg/ml
Formulation	Rabbit IgG in phosphate buffered saline (without Mg ²⁺ and Ca ²⁺), pH 7.4, 150mM NaCl, 0.02% sodium azide and 50% glycerol.
Storage	Store at -20°C

Application Details

Western blotting: 1:1000

Images



Western Blot analysis of lysates of 1. Hela cell and 2. Hela cell treated with 100ng/mL LPS for 30min, using primary antibody at 1:1000 dilution.

Note: This product is for in vitro research use only