

## Mre11 (Phospho-Ser676) Antibody

Catalog No: #12731

Package Size: #12731-1 50ul #12731-2 100ul

Orders: [order@signalwayantibody.com](mailto:order@signalwayantibody.com)Support: [tech@signalwayantibody.com](mailto:tech@signalwayantibody.com)

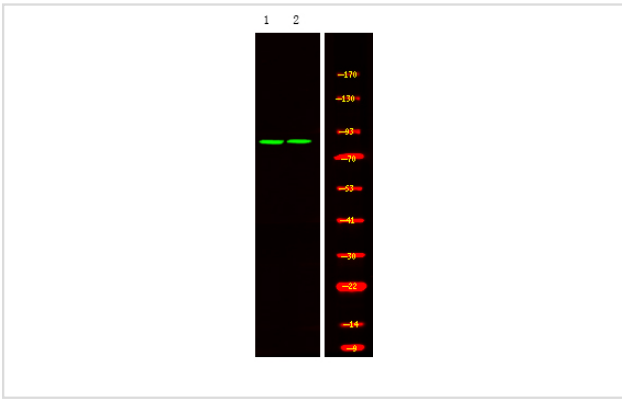
## Description

Product Name	Mre11 (Phospho-Ser676) Antibody
Host Species	Rabbit
Clonality	Polyclonal
Purification	Antibodies were produced by immunizing rabbits with synthetic phosphopeptide and KLH conjugates. Antibodies were purified by affinity-chromatography using epitope-specific phosphopeptide. Non-phospho specific antibodies were removed by chromatography using non-phosphopeptide.
Applications	WB
Species Reactivity	Hu
Specificity	Mre11 (Phospho-Ser676) Antibody detects endogenous levels of Mre11 only when phosphorylated at Ser676
Immunogen Type	Peptide
Immunogen Description	A synthesized peptide derived from human Mre11 (Phospho-Ser676)
Target Name	Mre11
Modification	Phospho
Other Names	MRE11A, AT-like disease, Endo/exonuclease Mre11, HNGS1, MRE11, MRE11 homolog 1, MRE11 homolog A, MRE11B, ATLD
Accession No.	Swiss-Prot#: P49959NCBI Gene ID: 4361
Uniprot	P49959
GeneID	4361;
Target Species	human
Calculated MW	80kd
Concentration	1.0mg/ml
Formulation	Rabbit IgG in phosphate buffered saline (without Mg <sup>2+</sup> and Ca <sup>2+</sup> ), pH 7.4, 150mM NaCl, 0.02% sodium azide and 50% glycerol.
Storage	Store at -20°C

## Application Details

Western blotting: 1:1000

## Images



Western Blot analysis of lysates of HeLa and A431 cell , using primary antibody at 1:1000 dilution.

---

Note: This product is for in vitro research use only