

## MYPT1/2 (Phospho-Ser668/Ser618) Antibody

Catalog No: #12733



Package Size: #12733-1 50ul #12733-2 100ul

Orders: [order@signalwayantibody.com](mailto:order@signalwayantibody.com)Support: [tech@signalwayantibody.com](mailto:tech@signalwayantibody.com)

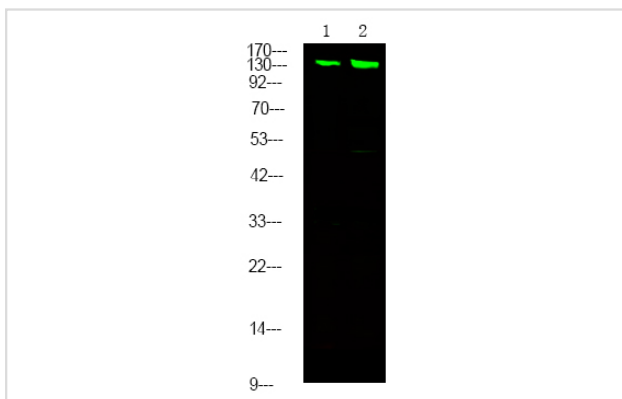
## Description

Product Name	MYPT1/2 (Phospho-Ser668/Ser618) Antibody
Host Species	Rabbit
Clonality	Polyclonal
Purification	Antibodies were produced by immunizing rabbits with synthetic phosphopeptide and KLH conjugates. Antibodies were purified by affinity-chromatography using epitope-specific phosphopeptide. Non-phospho specific antibodies were removed by chromatography using non-phosphopeptide.
Applications	WB
Species Reactivity	Hu Ms Rt
Specificity	MYPT1/2 (Phospho-Ser668/Ser618) Antibody detects endogenous levels of MYPT1/2 only when phosphorylated at Ser668/Ser618
Immunogen Type	Peptide
Immunogen Description	A synthesized peptide derived from human MYPT1/2 (Phospho-Ser668/Ser618)
Target Name	MYPT1/2
Modification	Phospho
Other Names	PPP1R12A, M130, MYPT1, MBS, Myosin binding subunit
Accession No.	Swiss-Prot#: O14974/O60237NCBI Gene ID: 4659/4660
Uniprot	O14974
GeneID	4659;
Target Species	human
Calculated MW	115kd
Concentration	1.0mg/ml
Formulation	Rabbit IgG in phosphate buffered saline (without Mg <sup>2+</sup> and Ca <sup>2+</sup> ), pH 7.4, 150mM NaCl, 0.02% sodium azide and 50% glycerol.
Storage	Store at -20°C

## Application Details

Western blotting: 1:1000

## Images



Western Blot analysis of lysates of 1. HeLa cell and 2. HeLa cell Serum-free treated, using primary antibody at 1:1000 dilution.

---

Note: This product is for in vitro research use only