

## ROR2 (Phospho-Ser449) Antibody

Catalog No: #12736

Package Size: #12736-1 50ul #12736-2 100ul

Orders: order@signalwayantibody.com

Support: tech@signalwayantibody.com

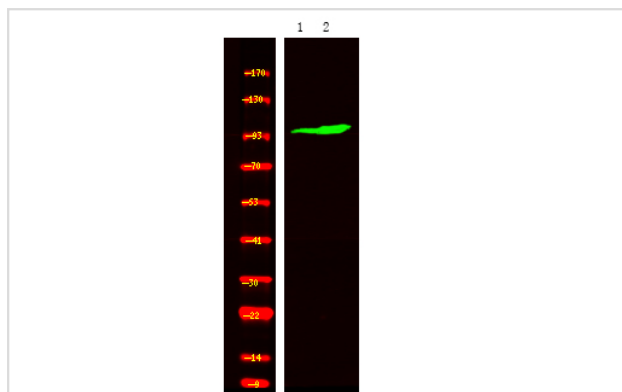
## Description

Product Name	ROR2 (Phospho-Ser449) Antibody
Host Species	Rabbit
Clonality	Polyclonal
Purification	Antibodies were produced by immunizing rabbits with synthetic phosphopeptide and KLH conjugates. Antibodies were purified by affinity-chromatography using epitope-specific phosphopeptide. Non-phospho specific antibodies were removed by chromatography using non-phosphopeptide.
Applications	WB
Species Reactivity	Hu Ms
Specificity	ROR2 (Phospho-Ser449) Antibody detects endogenous levels of ROR2 only when phosphorylated at Ser449
Immunogen Type	Peptide
Immunogen Description	A synthesized peptide derived from human ROR2 (Phospho-Ser449)
Target Name	ROR2
Modification	Phospho
Other Names	ROR2, BDB1, Robinow syndrome, NTRKR2, BDB, Brachydactyly type B
Accession No.	Swiss-Prot#: Q01974NCBI Gene ID: 4920
Uniprot	Q01974
GeneID	4920;
Target Species	human
Calculated MW	105kd
Concentration	1.0mg/ml
Formulation	Liquid in PBS containing 50% glycerol, 0.5% BSA and 0.02% sodium azide.
Storage	Store at -20°C

## Application Details

Western blotting: 1:1000

## Images



Western Blot analysis of lysates of 1. HeLa cell and 2. HeLa cell treated with 100ng/mL LPS for 30min, using primary antibody at 1:1000 dilution.

---

Note: This product is for in vitro research use only