

SRPK1 (Phospho-Thr601) Antibody

Catalog No: #12738



Package Size: #12738-1 50ul #12738-2 100ul

Orders: order@signalwayantibody.comSupport: tech@signalwayantibody.com

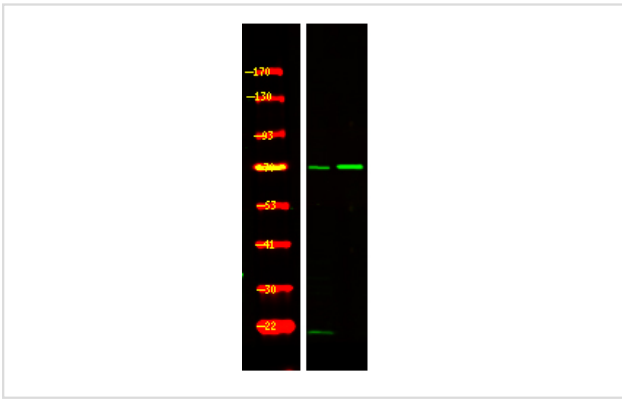
Description

Product Name	SRPK1 (Phospho-Thr601) Antibody
Host Species	Rabbit
Clonality	Polyclonal
Purification	Antibodies were produced by immunizing rabbits with synthetic phosphopeptide and KLH conjugates. Antibodies were purified by affinity-chromatography using epitope-specific phosphopeptide. Non-phospho specific antibodies were removed by chromatography using non-phosphopeptide.
Applications	WB
Species Reactivity	Hu Ms
Specificity	SRPK1 (Phospho-Thr601) Antibody detects endogenous levels of SRPK1 only when phosphorylated at Thr601
Immunogen Type	Peptide
Immunogen Description	A synthesized peptide derived from human SRPK1 (Phospho-Thr601)
Target Name	SRPK1
Modification	Phospho
Other Names	SRPK1, SFRS protein kinase 1, SFRSK1, SR-protein-specific kinase 1, SRSF protein kinase 1
Accession No.	Swiss-Prot#: Q96SB4NCBI Gene ID: 6732
Uniprot	Q96SB4
GeneID	6732;
Target Species	human
Calculated MW	95kd
Concentration	1.0mg/ml
Formulation	Rabbit IgG in phosphate buffered saline (without Mg ²⁺ and Ca ²⁺), pH 7.4, 150mM NaCl, 0.02% sodium azide and 50% glycerol.
Storage	Store at -20°C

Application Details

Western blotting: 1:1000

Images



Western Blot analysis of lysates of 1. HepG2 cell and 2. HepG2 cell treated with 100ng/mL LPS for 30min, using primary antibody at 1:1000 dilution.

Note: This product is for in vitro research use only