

AP-2mu (Phospho-Thr156) Antibody

Catalog No: #12741

Package Size: #12741-1 50ul #12741-2 100ul

Orders: order@signalwayantibody.comSupport: tech@signalwayantibody.com

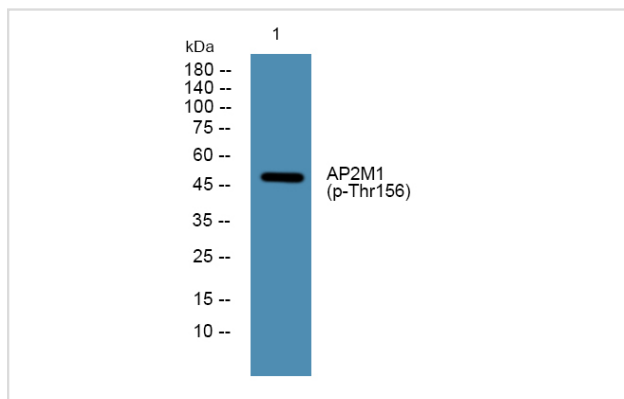
Description

Product Name	AP-2mu (Phospho-Thr156) Antibody
Host Species	Rabbit
Clonality	Polyclonal
Purification	Antibodies were produced by immunizing rabbits with synthetic phosphopeptide and KLH conjugates. Antibodies were purified by affinity-chromatography using epitope-specific phosphopeptide. Non-phospho specific antibodies were removed by chromatography using non-phosphopeptide.
Applications	WB
Species Reactivity	Hu Ms Rt
Specificity	AP-2mu (Phospho-Thr156) Antibody detects endogenous levels of AP-2mu only when phosphorylated at Thr156
Immunogen Type	Peptide
Immunogen Description	A synthesized peptide derived from human AP-2mu (Phospho-Thr156)
Target Name	AP-2mu
Modification	Phospho
Other Names	AP2M1, Adaptin-mu2, AP-2 complex subunit mu, AP-2 mu 2 chain, AP-2 mu chain, AP50, CLAPM1, Mu2, KIAA0109, HA2 50 kDa subunit
Accession No.	Swiss-Prot#: Q96CW1 NCBI Gene ID: 1173
Uniprot	Q96CW1
GeneID	1173;
Target Species	human
Calculated MW	49kd
Concentration	1.0mg/ml
Formulation	Rabbit IgG in phosphate buffered saline (without Mg ²⁺ and Ca ²⁺), pH 7.4, 150mM NaCl, 0.02% sodium azide and 50% glycerol.
Storage	Store at -20°C

Application Details

Western blotting: 1:1000

Images



Western blot analysis of lysates from K562 cells, primary antibody was diluted at 1:1000, 4° over night

Note: This product is for in vitro research use only