

CD19 (Phospho-Tyr500) Antibody

Catalog No: #12747

Package Size: #12747-1 50ul #12747-2 100ul

Orders: order@signalwayantibody.comSupport: tech@signalwayantibody.com

Description

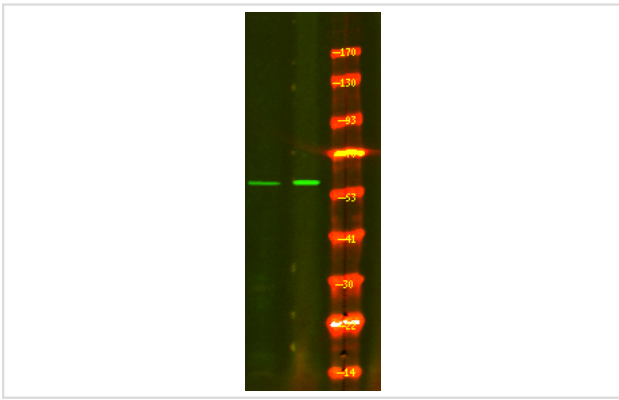
Product Name	CD19 (Phospho-Tyr500) Antibody
Host Species	Rabbit
Clonality	Polyclonal
Purification	Antibodies were produced by immunizing rabbits with synthetic phosphopeptide and KLH conjugates. Antibodies were purified by affinity-chromatography using epitope-specific phosphopeptide. Non-phospho specific antibodies were removed by chromatography using non-phosphopeptide.
Applications	WB
Species Reactivity	Hu Ms
Specificity	CD19 (Phospho-Tyr500) Antibody detects endogenous levels of CD19 only when phosphorylated at Tyr500
Immunogen Type	Peptide
Immunogen Description	A synthesized peptide derived from human CD19 (Phospho-Tyr500)
Target Name	CD19
Modification	Phospho
Other Names	CD19, B-lymphocyte antigen CD19, CD19 molecule, Differentiation antigen CD19, T-cell surface antigen Leu-12, B4, CD19 antigen, CVID3
Accession No.	Swiss-Prot#: P15391NCBI Gene ID: 930
Uniprot	P15391
GeneID	930;
Target Species	human
Calculated MW	61kd
Concentration	1.0mg/ml
Formulation	Liquid in PBS containing 50% glycerol, and 0.02% sodium azide.
Storage	Store at -20°C

Application Details

Western blotting: 1:1000

Images

Western Blot analysis of lysates of mouse brain (Left) and Jurkat cell (Right), using primary antibody at 1:1000 dilution.



Note: This product is for in vitro research use only