

DRP1 (Phospho-Ser616) Antibody

Catalog No: #12749

Orders: order@signalwayantibody.comSupport: tech@signalwayantibody.com

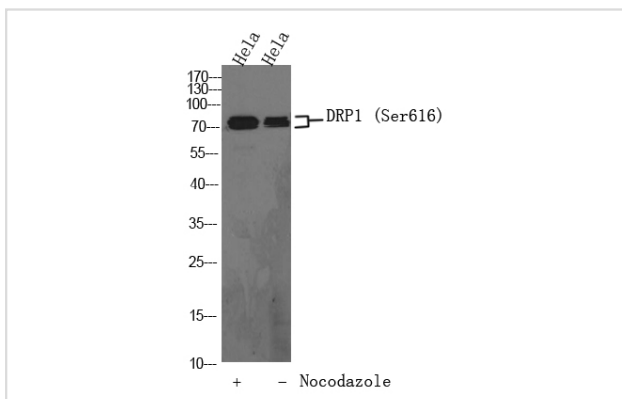
Description

Product Name	DRP1 (Phospho-Ser616) Antibody
Host Species	Rabbit
Clonality	Polyclonal
Purification	Antibodies were produced by immunizing rabbits with synthetic phosphopeptide and KLH conjugates. Antibodies were purified by affinity-chromatography using epitope-specific phosphopeptide. Non-phospho specific antibodies were removed by chromatography using non-phosphopeptide.
Applications	WB
Species Reactivity	Hu Ms Rt
Specificity	DRP1 (Phospho-Ser616) Antibody detects endogenous levels of DRP1 only when phosphorylated at Ser616
Immunogen Type	Peptide
Immunogen Description	A synthesized peptide derived from human DRP1 (Phospho-Ser616)
Target Name	DRP1
Modification	Phospho
Other Names	DNM1L, DYMPLE, Dynamin 1-like, Dynamin-like protein, Dynamin-like protein 4, Dynamin-like protein IV, DLP1, Dnm1p/Vps1p-like protein, DVLP, Dynamin-related protein 1, DYNIV-11, DRP1, Dynamin-1-like protein, VPS1, EMPF, HDYNIV
Accession No.	Swiss-Prot#: O00429NCBI Gene ID: 10059
Uniprot	O00429
GeneID	10059;
Target Species	human
Calculated MW	79kd
Concentration	1.0mg/ml
Formulation	Liquid in PBS containing 50% glycerol, 0.5% BSA and 0.02% sodium azide.
Storage	Store at -20°C

Application Details

Western blotting: 1:1000

Images



Western Blot analysis of hela cells, hela cell treated or untreated by Nocodazole at 100 ng/ml 17h. Primary Antibody was diluted at 1:1000. Secondary antibody(catalog#:RS23920) was diluted at 1:10000

Note: This product is for in vitro research use only