

eIF2B (Phospho-Ser67) Antibody

Catalog No: #12750

Package Size: #12750-1 50ul #12750-2 100ul

Orders: order@signalwayantibody.comSupport: tech@signalwayantibody.com

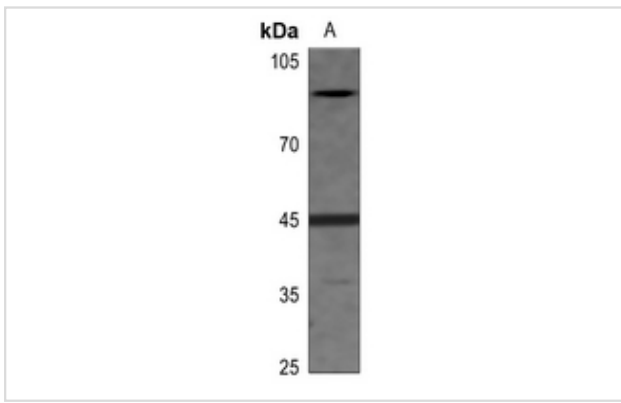
Description

Product Name	eIF2B (Phospho-Ser67) Antibody
Host Species	Rabbit
Clonality	Polyclonal
Purification	Antibodies were produced by immunizing rabbits with synthetic phosphopeptide and KLH conjugates. Antibodies were purified by affinity-chromatography using epitope-specific phosphopeptide. Non-phospho specific antibodies were removed by chromatography using non-phosphopeptide.
Applications	WB
Species Reactivity	Hu
Specificity	eIF2B (Phospho-Ser67) Antibody detects endogenous levels of eIF2B only when phosphorylated at Ser67
Immunogen Type	Peptide
Immunogen Description	A synthesized peptide derived from human eIF2B (Phospho-Ser67)
Target Name	eIF2B
Modification	Phospho
Other Names	EIF2S2, EIF-2-beta, EIF2, EIF2B, EIF2beta, PPP1R67
Accession No.	Swiss-Prot#: P20042NCBI Gene ID: 8894
Uniprot	P20042
GeneID	8894;
Target Species	human
Calculated MW	40kd
Concentration	1.0mg/ml
Formulation	Liquid in 0.42% Potassium phosphate, 0.87% Sodium chloride, pH 7.3, 30% glycerol, and 0.01% sodium azide.
Storage	Store at -20°C

Application Details

WB (1/500 - 1/1000)

Images



Western blot analysis of EIF2S2 (pS67) expression in DLD (A) whole cell lysates.

Note: This product is for in vitro research use only