

EIF5 (Phospho-Ser389+Ser390) Antibody

Catalog No: #12751



Package Size: #12751-1 50ul #12751-2 100ul

Orders: order@signalwayantibody.comSupport: tech@signalwayantibody.com

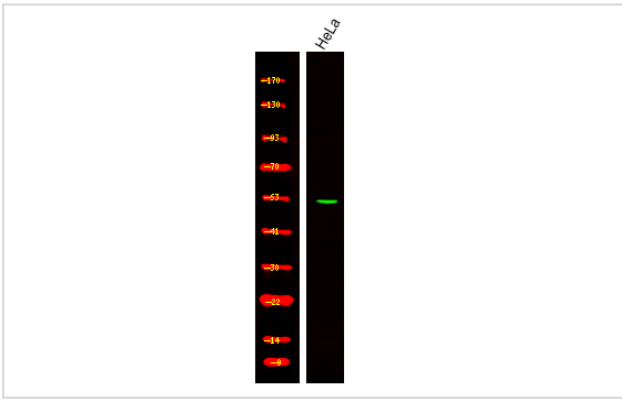
Description

Product Name	EIF5 (Phospho-Ser389+Ser390) Antibody
Host Species	Rabbit
Clonality	Polyclonal
Purification	Antibodies were produced by immunizing rabbits with synthetic phosphopeptide and KLH conjugates. Antibodies were purified by affinity-chromatography using epitope-specific phosphopeptide. Non-phospho specific antibodies were removed by chromatography using non-phosphopeptide.
Applications	WB
Species Reactivity	Hu
Specificity	EIF5 (Phospho-Ser389+Ser390) Antibody detects endogenous levels of EIF5 only when phosphorylated at Ser389+Ser390
Immunogen Type	Peptide
Immunogen Description	A synthesized peptide derived from human EIF5 (Phospho-Ser389+Ser390)
Target Name	EIF5
Modification	Phospho
Other Names	EIF5, EIF-5A, EIF-5
Accession No.	Swiss-Prot#: P55010NCBI Gene ID: 1983
Uniprot	P55010
GeneID	1983;
Target Species	human
Calculated MW	49kd
Concentration	1.0mg/ml
Formulation	Rabbit IgG in phosphate buffered saline (without Mg ²⁺ and Ca ²⁺), pH 7.4, 150mM NaCl, 0.02% sodium azide and 50% glycerol.
Storage	Store at -20°C

Application Details

Western blotting: 1:1000

Images



Western Blot analysis of lysates of HeLa, using primary antibody at 1:1000 dilution.

Note: This product is for in vitro research use only