

## EIF6 (Phospho-Ser235) Antibody

Catalog No: #12752

Package Size: #12752-1 50ul #12752-2 100ul

Orders: order@signalwayantibody.com

Support: tech@signalwayantibody.com

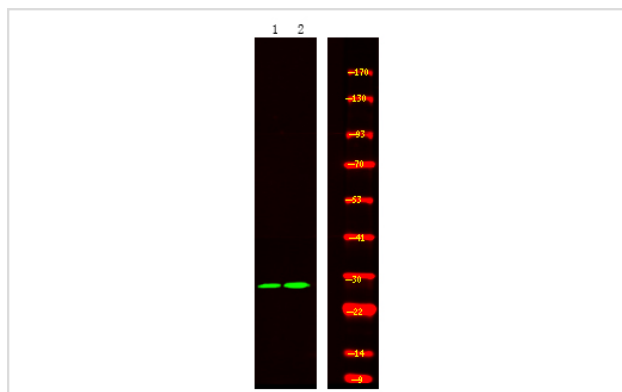
## Description

Product Name	EIF6 (Phospho-Ser235) Antibody
Host Species	Rabbit
Clonality	Polyclonal
Purification	Antibodies were produced by immunizing rabbits with synthetic phosphopeptide and KLH conjugates. Antibodies were purified by affinity-chromatography using epitope-specific phosphopeptide. Non-phospho specific antibodies were removed by chromatography using non-phosphopeptide.
Applications	WB
Species Reactivity	Hu Ms Rt
Specificity	EIF6 (Phospho-Ser235) Antibody detects endogenous levels of EIF6 only when phosphorylated at Ser235
Immunogen Type	Peptide
Immunogen Description	A synthesized peptide derived from human EIF6 (Phospho-Ser235)
Target Name	EIF6
Modification	Phospho
Other Names	EIF6, B(2)GCN homolog, B4 integrin interactor, CAB, EIF-6, p27(BBP), p27BBP, B(2)gcn, ITGB4BP
Accession No.	Swiss-Prot#: P56537NCBI Gene ID: 3692
Uniprot	P56537
GeneID	3692;
Target Species	human
Calculated MW	27kd
Concentration	1.0mg/ml
Formulation	Liquid in PBS containing 50% glycerol, 0.5% BSA and 0.02% sodium azide.
Storage	Store at -20°C

## Application Details

Western blotting: 1:1000

## Images



Western Blot analysis of lysates of 1. HeLa cell and 2. HeLa cell treated with 100ng/mL LPS for 30min, using primary antibody at 1:1000 dilution.

---

Note: This product is for in vitro research use only