

## FANCD2 (Phospho-Thr691) Antibody

Catalog No: #12754

Package Size: #12754-1 50ul #12754-2 100ul

Orders: [order@signalwayantibody.com](mailto:order@signalwayantibody.com)Support: [tech@signalwayantibody.com](mailto:tech@signalwayantibody.com)

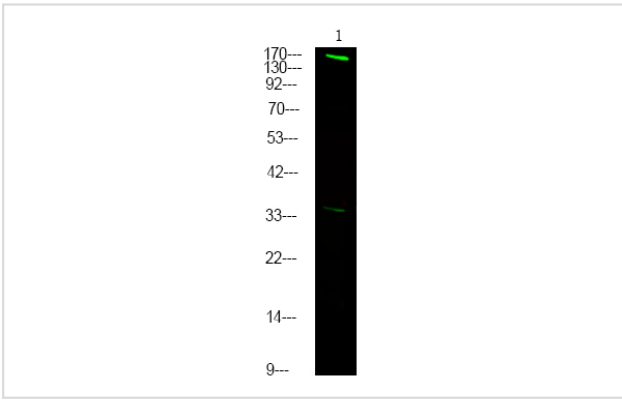
## Description

Product Name	FANCD2 (Phospho-Thr691) Antibody
Host Species	Rabbit
Clonality	Polyclonal
Purification	Antibodies were produced by immunizing rabbits with synthetic phosphopeptide and KLH conjugates. Antibodies were purified by affinity-chromatography using epitope-specific phosphopeptide. Non-phospho specific antibodies were removed by chromatography using non-phosphopeptide.
Applications	WB
Species Reactivity	Hu
Specificity	FANCD2 (Phospho-Thr691) Antibody detects endogenous levels of FANCD2 only when phosphorylated at Thr691
Immunogen Type	Peptide
Immunogen Description	A synthesized peptide derived from human FANCD2 (Phospho-Thr691)
Target Name	FANCD2
Modification	Phospho
Other Names	FANCD2, FA-D2, FAD, FACD, FA4, FAD2, FANCD, Protein FACD2
Accession No.	Swiss-Prot#: Q9BXW9NCBI Gene ID: 2177
Uniprot	Q9BXW9
GeneID	2177;
Target Species	human
Calculated MW	166kd
Concentration	1.0mg/ml
Formulation	Rabbit IgG in phosphate buffered saline (without Mg <sup>2+</sup> and Ca <sup>2+</sup> ), pH 7.4, 150mM NaCl, 0.02% sodium azide and 50% glycerol.
Storage	Store at -20°C

## Application Details

Western blotting: 1:1000

## Images



Western Blot analysis of lysates of mouse spleen, using primary antibody at 1:1000 dilution.

---

Note: This product is for in vitro research use only