

INCENP (Phospho-Thr59) Antibody

Catalog No: #12762

Package Size: #12762-1 50ul #12762-2 100ul

Orders: order@signalwayantibody.comSupport: tech@signalwayantibody.com

Description

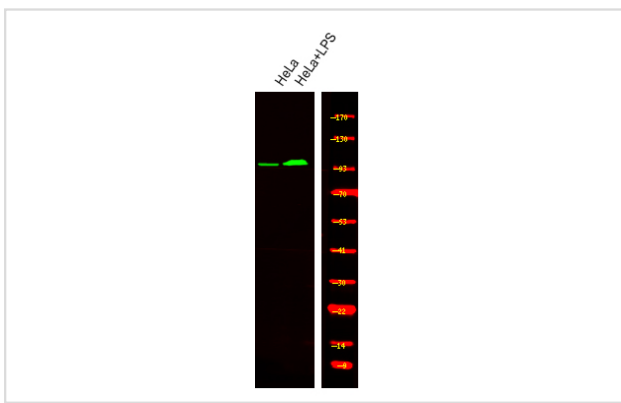
Product Name	INCENP (Phospho-Thr59) Antibody
Host Species	Rabbit
Clonality	Polyclonal
Purification	Antibodies were produced by immunizing rabbits with synthetic phosphopeptide and KLH conjugates. Antibodies were purified by affinity-chromatography using epitope-specific phosphopeptide. Non-phospho specific antibodies were removed by chromatography using non-phosphopeptide.
Applications	WB
Species Reactivity	Hu Ms Rt
Specificity	INCENP (Phospho-Thr59) Antibody detects endogenous levels of INCENP only when phosphorylated at Thr59
Immunogen Type	Peptide
Immunogen Description	A synthesized peptide derived from human INCENP (Phospho-Thr59)
Target Name	INCENP
Modification	Phospho
Other Names	INCENP, Chromosomal passenger protein, Inner centromere protein
Accession No.	Swiss-Prot#: Q9NQS7NCBI Gene ID: 3619
Uniprot	Q9NQS7
GeneID	3619;
Target Species	human
Calculated MW	105kd
Concentration	1.0mg/ml
Formulation	Rabbit IgG in phosphate buffered saline (without Mg ²⁺ and Ca ²⁺), pH 7.4, 150mM NaCl, 0.02% sodium azide and 50% glycerol.
Storage	Store at -20°C

Application Details

Western blotting: 1:1000

Images

Western Blot analysis of lysates of HeLa and HeLa treated with LPS, using primary antibody at 1:1000 dilution.



Note: This product is for in vitro research use only