

## NDEL1 (Phospho-Thr219) Antibody

Catalog No: #12766

Package Size: #12766-1 50ul #12766-2 100ul

Orders: [order@signalwayantibody.com](mailto:order@signalwayantibody.com)Support: [tech@signalwayantibody.com](mailto:tech@signalwayantibody.com)

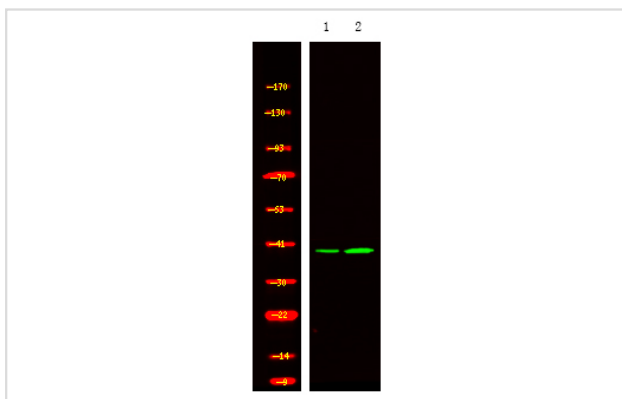
## Description

Product Name	NDEL1 (Phospho-Thr219) Antibody
Host Species	Rabbit
Clonality	Polyclonal
Purification	Antibodies were produced by immunizing rabbits with synthetic phosphopeptide and KLH conjugates. Antibodies were purified by affinity-chromatography using epitope-specific phosphopeptide. Non-phospho specific antibodies were removed by chromatography using non-phosphopeptide.
Applications	WB
Species Reactivity	Hu Ms Rt
Specificity	NDEL1 (Phospho-Thr219) Antibody detects endogenous levels of NDEL1 only when phosphorylated at Thr219
Immunogen Type	Peptide
Immunogen Description	A synthesized peptide derived from human NDEL1 (Phospho-Thr219)
Target Name	NDEL1
Modification	Phospho
Other Names	NDEL1, Endooligopeptidase A, MITAP1, NUDEL, Protein Nudel, EOPA, Mitosin-associated protein 1
Accession No.	Swiss-Prot#: Q9GZM8NCBI Gene ID: 81565
Uniprot	Q9GZM8
GeneID	81565;
Target Species	human
Calculated MW	38kd
Concentration	1.0mg/ml
Formulation	Rabbit IgG in phosphate buffered saline (without Mg <sup>2+</sup> and Ca <sup>2+</sup> ), pH 7.4, 150mM NaCl, 0.02% sodium azide and 50% glycerol.
Storage	Store at -20°C

## Application Details

Western blotting: 1:1000

## Images



Western Blot analysis of lysates of 1. HepG2 cell and 2. HepG2 cell treated with 100ng/mL LPS for 30min, using primary antibody at 1:1000 dilution.

---

Note: This product is for in vitro research use only