

## PDE3A (Phospho-Ser312) Antibody

Catalog No: #12773



Package Size: #12773-1 50ul #12773-2 100ul

Orders: [order@signalwayantibody.com](mailto:order@signalwayantibody.com)Support: [tech@signalwayantibody.com](mailto:tech@signalwayantibody.com)

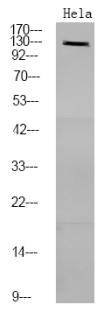
## Description

Product Name	PDE3A (Phospho-Ser312) Antibody
Host Species	Rabbit
Clonality	Polyclonal
Purification	Antibodies were produced by immunizing rabbits with synthetic phosphopeptide and KLH conjugates. Antibodies were purified by affinity-chromatography using epitope-specific phosphopeptide. Non-phospho specific antibodies were removed by chromatography using non-phosphopeptide.
Applications	WB
Species Reactivity	Hu Ms Rt
Specificity	PDE3A (Phospho-Ser312) Antibody detects endogenous levels of PDE3A only when phosphorylated at Ser312
Immunogen Type	Peptide
Immunogen Description	A synthesized peptide derived from human PDE3A (Phospho-Ser312)
Target Name	PDE3A
Modification	Phospho
Other Names	PDE3A, CGI-PDE-A, HcGIP2, Phosphodiesterase 3a, Phosphodiesterase isoform 3a, CGI-PDE, CGI-PDE A, CGIP2, HPDE-3A, Phosphodiesterase type 3A
Accession No.	Swiss-Prot#: Q14432NCBI Gene ID: 5139
Uniprot	Q14432
GeneID	5139;
Target Species	human
Calculated MW	125kd
Concentration	1.0mg/ml
Formulation	Rabbit IgG in phosphate buffered saline (without Mg <sup>2+</sup> and Ca <sup>2+</sup> ), pH 7.4, 150mM NaCl, 0.02% sodium azide and 50% glycerol.
Storage	Store at -20°C

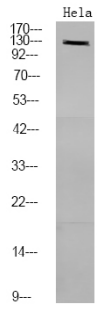
## Application Details

Western blotting: 1:1000

## Images



Western Blot analysis of lysates of HeLa cell, using primary antibody at 1:1000 dilution.



Western Blot analysis of lysates of HeLa cell, using primary antibody at 1:1000 dilution.

---

Note: This product is for in vitro research use only