

Rad2/FEN1 (Phospho-Ser187) Antibody

Catalog No: #12777



Package Size: #12777-1 50ul #12777-2 100ul

Orders: order@signalwayantibody.comSupport: tech@signalwayantibody.com

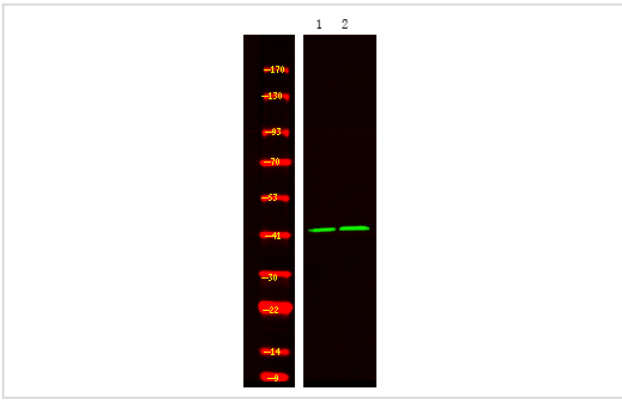
Description

Product Name	Rad2/FEN1 (Phospho-Ser187) Antibody
Host Species	Rabbit
Clonality	Polyclonal
Purification	Antibodies were produced by immunizing rabbits with synthetic phosphopeptide and KLH conjugates. Antibodies were purified by affinity-chromatography using epitope-specific phosphopeptide. Non-phospho specific antibodies were removed by chromatography using non-phosphopeptide.
Applications	WB
Species Reactivity	Hu Ms Rt
Specificity	Rad2/FEN1 (Phospho-Ser187) Antibody detects endogenous levels of Rad2/FEN1 only when phosphorylated at Ser187
Immunogen Type	Peptide
Immunogen Description	A synthesized peptide derived from human Rad2/FEN1 (Phospho-Ser187)
Target Name	Rad2/FEN1
Modification	Phospho
Other Names	FEN1, DNase IV, FEN-1, HFEN-1, Flap endonuclease 1, MF1, RAD2, Maturation factor 1, Maturation factor-1
Accession No.	Swiss-Prot#: P39748NCBI Gene ID: 2237
Uniprot	P39748
GeneID	2237;
Target Species	human
Calculated MW	42kd
Concentration	1.0mg/ml
Formulation	Rabbit IgG in phosphate buffered saline (without Mg ²⁺ and Ca ²⁺), pH 7.4, 150mM NaCl, 0.02% sodium azide and 50% glycerol.
Storage	Store at -20°C

Application Details

Western blotting: 1:1000

Images



Western Blot analysis of lysates of 1. HeLa cell and 2. HeLa cell treated with 100ng/mL LPS for 30min, using primary antibody at 1:1000 dilution.

Note: This product is for in vitro research use only