

## Raptor (Phospho-Ser863) Antibody

Catalog No: #12778

Package Size: #12778-1 50ul #12778-2 100ul

Orders: [order@signalwayantibody.com](mailto:order@signalwayantibody.com)Support: [tech@signalwayantibody.com](mailto:tech@signalwayantibody.com)

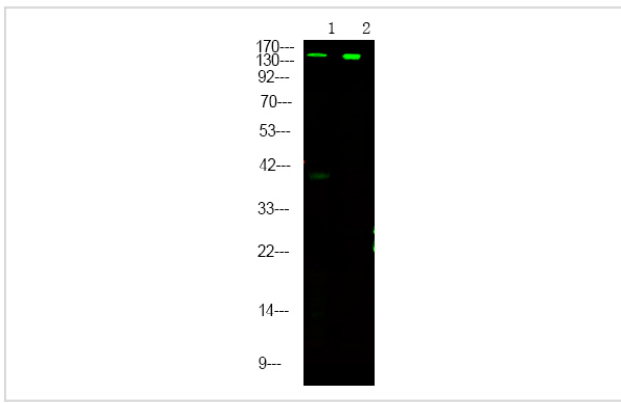
## Description

Product Name	Raptor (Phospho-Ser863) Antibody
Host Species	Rabbit
Clonality	Polyclonal
Purification	Antibodies were produced by immunizing rabbits with synthetic phosphopeptide and KLH conjugates. Antibodies were purified by affinity-chromatography using epitope-specific phosphopeptide. Non-phospho specific antibodies were removed by chromatography using non-phosphopeptide.
Applications	WB
Species Reactivity	Hu Ms Rt
Specificity	Raptor (Phospho-Ser863) Antibody detects endogenous levels of Raptor only when phosphorylated at Ser863
Immunogen Type	Peptide
Immunogen Description	A synthesized peptide derived from human Raptor (Phospho-Ser863)
Target Name	Raptor
Modification	Phospho
Other Names	RPTOR, KOG1, KIAA1303, RAPTOR, Mip1
Accession No.	Swiss-Prot#: Q8N122NCBI Gene ID: 57521
Uniprot	Q8N122
GeneID	57521;
Target Species	human
Calculated MW	149kd
Concentration	1.0mg/ml
Formulation	Rabbit IgG in phosphate buffered saline (without Mg <sup>2+</sup> and Ca <sup>2+</sup> ), pH 7.4, 150mM NaCl, 0.02% sodium azide and 50% glycerol.
Storage	Store at -20°C

## Application Details

Western blotting: 1:1000

## Images



Western Blot analysis of lysates of 1. MCF-7 cell and 2. HepG2 cell, using primary antibody at 1:1000 dilution.

---

Note: This product is for in vitro research use only