

## RSK2 (Phospho-Tyr529) Antibody

Catalog No: #12781

Package Size: #12781-1 50ul #12781-2 100ul

Orders: [order@signalwayantibody.com](mailto:order@signalwayantibody.com)Support: [tech@signalwayantibody.com](mailto:tech@signalwayantibody.com)

## Description

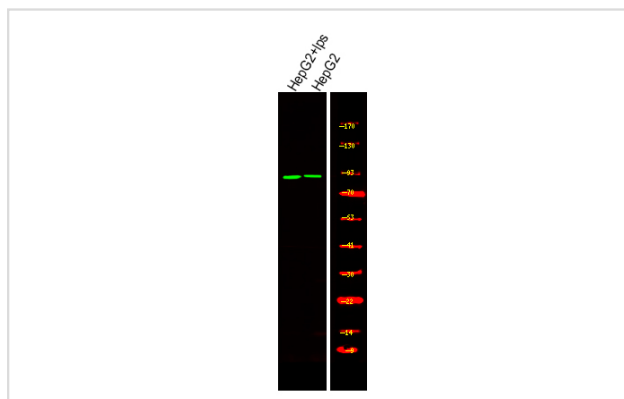
Product Name	RSK2 (Phospho-Tyr529) Antibody
Host Species	Rabbit
Clonality	Polyclonal
Purification	Antibodies were produced by immunizing rabbits with synthetic phosphopeptide and KLH conjugates. Antibodies were purified by affinity-chromatography using epitope-specific phosphopeptide. Non-phospho specific antibodies were removed by chromatography using non-phosphopeptide.
Applications	WB
Species Reactivity	Hu Ms
Specificity	RSK2 (Phospho-Tyr529) Antibody detects endogenous levels of RSK2 only when phosphorylated at Tyr529
Immunogen Type	Peptide
Immunogen Description	A synthesized peptide derived from human RSK2 (Phospho-Tyr529)
Target Name	RSK2
Modification	Phospho
Other Names	RPS6KA3, Coffin-Lowry syndrome, HU-2, ISPK1, MAPKAP kinase 1B, MAPKAPK-1b, MRX19, Ribosomal S6 kinase 2, RSK-2, p90-RSK 3, p90RSK3, RSK, RSK2, S6K-alpha-3, S6K-alpha3, CLS, ISPK-1, MAPKAPK1B, p90-RSK2, Pp90RSK2
Accession No.	Swiss-Prot#: P51812NCBI Gene ID: 6197
Uniprot	P51812
GeneID	6197;
Target Species	human
Calculated MW	80kd
Concentration	1.0mg/ml
Formulation	Rabbit IgG in phosphate buffered saline (without Mg <sup>2+</sup> and Ca <sup>2+</sup> ), pH 7.4, 150mM NaCl, 0.02% sodium azide and 50% glycerol.
Storage	Store at -20°C

## Application Details

Western blotting: 1:1000

## Images

Western Blot analysis of lysates of HepG2 treated with LPS and HepG2, using primary antibody at 1:1000 dilution.



Note: This product is for in vitro research use only