

S100A9 (Phospho-Thr113) Antibody

Catalog No: #12782



Package Size: #12782-1 50ul #12782-2 100ul

Orders: order@signalwayantibody.comSupport: tech@signalwayantibody.com

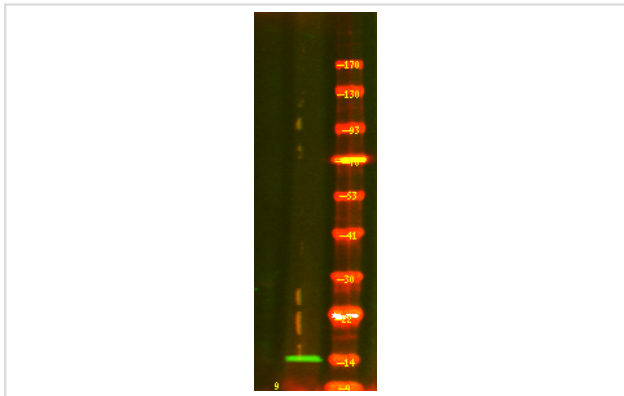
Description

Product Name	S100A9 (Phospho-Thr113) Antibody
Host Species	Rabbit
Clonality	Polyclonal
Purification	Antibodies were produced by immunizing rabbits with synthetic phosphopeptide and KLH conjugates. Antibodies were purified by affinity-chromatography using epitope-specific phosphopeptide. Non-phospho specific antibodies were removed by chromatography using non-phosphopeptide.
Applications	WB
Species Reactivity	Hu
Specificity	S100A9 (Phospho-Thr113) Antibody detects endogenous levels of S100A9 only when phosphorylated at Thr113
Immunogen Type	Peptide
Immunogen Description	A synthesized peptide derived from human S100A9 (Phospho-Thr113)
Target Name	S100A9
Modification	Phospho
Other Names	S100A9, 60B8AG, Calgranulin B, CFAG, CAGB, Calgranulin-B, Calprotectin L1H subunit, CGLB, L1Ag, MRP14, NIF, p14, Protein S100-A9, LIAG, MAC387, MRP-14
Accession No.	Swiss-Prot#: P06702NCBI Gene ID: 6280
Uniprot	P06702
GeneID	6280;
Target Species	human
Calculated MW	13kd
Concentration	1.0mg/ml
Formulation	Liquid in PBS containing 50% glycerol, 0.5% BSA and 0.02% sodium azide.
Storage	Store at -20°C

Application Details

Western blotting: 1:1000

Images



Western Blot analysis of lysates of A549 cell (Left) and A549 cell treated with 100ng/mL LPS for 30min (Right), using primary antibody at 1:1000 dilution.

Note: This product is for in vitro research use only