

TRF2 (Phospho-Ser323) Antibody

Catalog No: #12788

Package Size: #12788-1 50ul #12788-2 100ul

Orders: order@signalwayantibody.comSupport: tech@signalwayantibody.com

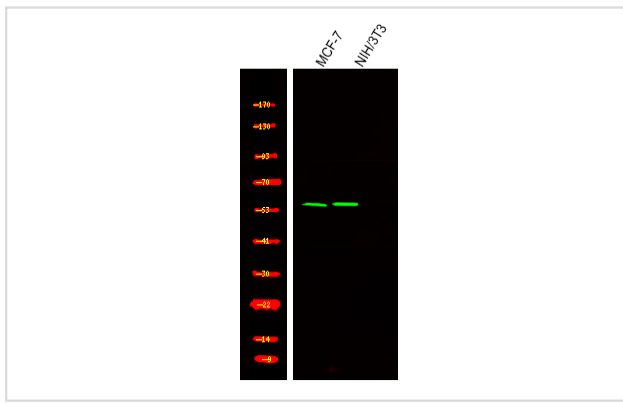
Description

Product Name	TRF2 (Phospho-Ser323) Antibody
Host Species	Rabbit
Clonality	Polyclonal
Purification	Antibodies were produced by immunizing rabbits with synthetic phosphopeptide and KLH conjugates. Antibodies were purified by affinity-chromatography using epitope-specific phosphopeptide. Non-phospho specific antibodies were removed by chromatography using non-phosphopeptide.
Applications	WB
Species Reactivity	Hu
Specificity	TRF2 (Phospho-Ser323) Antibody detects endogenous levels of TRF2 only when phosphorylated at Ser323
Immunogen Type	Peptide
Immunogen Description	A synthesized peptide derived from human TRF2 (Phospho-Ser323)
Target Name	TRF2
Modification	Phospho
Other Names	TERF2, TRF2, TRBF2, TTAGGG repeat-binding factor 2, Telomeric DNA-binding protein
Accession No.	Swiss-Prot#: Q15554NCBI Gene ID: 7014
Uniprot	Q15554
GeneID	7014;
Target Species	human
Calculated MW	60kd
Concentration	1.0mg/ml
Formulation	Rabbit IgG in phosphate buffered saline (without Mg ²⁺ and Ca ²⁺), pH 7.4, 150mM NaCl, 0.02% sodium azide and 50% glycerol.
Storage	Store at -20°C

Application Details

Western blotting: 1:1000

Images



Western Blot analysis of lysates of MCF-7 and NIH/3T3, using primary antibody at 1:1000 dilution.

Note: This product is for in vitro research use only