

CDC25A (Phospho-Tyr59) Antibody

Catalog No: #11598

Package Size: #11598-1 50ul #11598-2 100ul

Orders: order@signalwayantibody.comSupport: tech@signalwayantibody.com

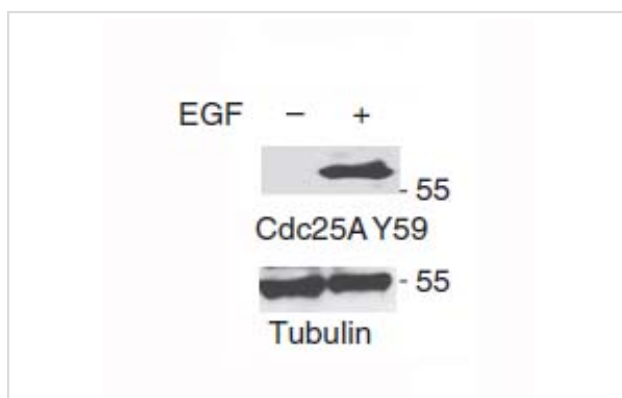
Description

Product Name	CDC25A (Phospho-Tyr59) Antibody
Host Species	Rabbit
Clonality	Polyclonal
Applications	WB IHC
Species Reactivity	Hu
Specificity	The antibody detects endogenous level of cdc25A only when phosphorylated at tyrosine 59.
Immunogen Type	Peptide
Immunogen Description	Peptide sequence around phosphorylation site of tyrosine 59 (S-D-Y(p)-E-Q) derived from Human CDC25A.
Target Name	CDC25A
Modification	Phospho
Other Names	CDC25M3, MPIP1
Accession No.	Swiss-Prot#: P30304NCBI Gene ID: 993
Uniprot	P30304
GeneID	993;
Calculated MW	70kd
Concentration	1.0mg/mL
Formulation	Supplied at 1.0mg/mL in phosphate buffered saline (without Mg ²⁺ and Ca ²⁺), pH 7.4, 150mM NaCl, 0.02% sodium azide and 50% glycerol.
Storage	Store at -20°C

Application Details

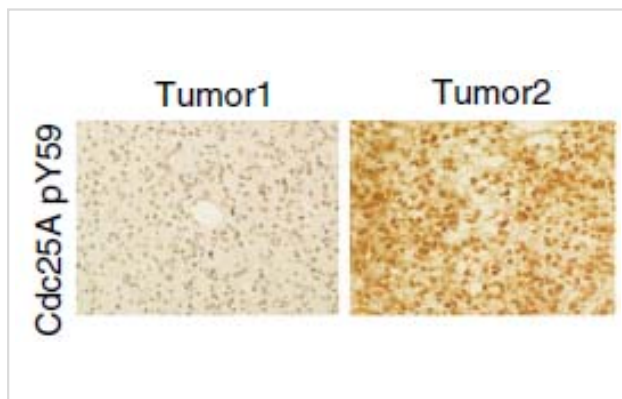
Western blotting: 1:500~1:1000

Images



Western blot analysis of extracts from U87 cells, treated with EGF using CDC25A(Phospho-Tyr59) Antibody #11598.

Reference: Nat. Commun. 7:12431 doi: 10.1038/ncomms12431 (2016).



Immunohistochemical analysis of a variety of human tumor tissue using CDC25A(Phospho-Tyr59) Antibody #11598.

Reference: Nat. Commun. 7:12431 doi:

10.1038/ncomms12431 (2016).

Product Description

Antibodies were produced by immunizing rabbits with synthetic phosphopeptide and KLH conjugates. Antibodies were purified by affinity-chromatography using epitope-specific phosphopeptide. Non-phospho specific antibodies were removed by chromatography using non-phosphopeptide.

Background

Tyrosine protein phosphatase which functions as a dosage-dependent inducer of mitotic progression. Directly dephosphorylates CDC2 and stimulates its kinase activity. Also dephosphorylates CDK2 in complex with cyclin E, in vitro.

Note: This product is for in vitro research use only