

## APOBEC3A Antibody

Catalog No: #44289

Orders: [order@signalwayantibody.com](mailto:order@signalwayantibody.com)Support: [tech@signalwayantibody.com](mailto:tech@signalwayantibody.com)

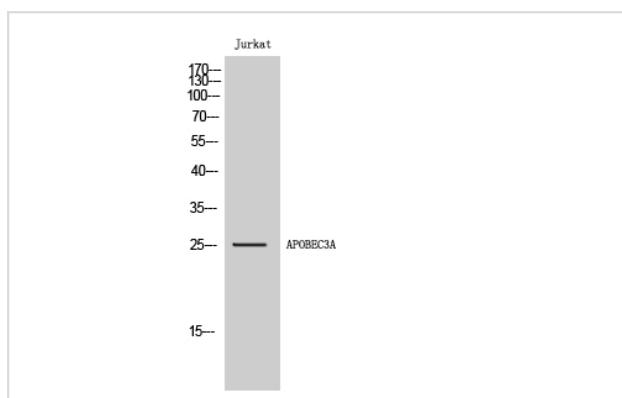
## Description

Product Name	APOBEC3A Antibody
Host Species	Rabbit
Clonality	Polyclonal
Purification	Immunogen affinity purified
Applications	WB
Species Reactivity	Hu Ms
Specificity	APOBEC3A Antibody detects endogenous levels of total APOBEC3A
Immunogen Type	Peptide
Immunogen Description	A synthesized peptide derived from human APOBEC3A
Target Name	APOBEC3A
Other Names	APOBEC3A, ARP3, BK150C2.1, Phorbolin i, Phorbolin-1, PHRBN, Phorbolin 1
Accession No.	Swiss-Prot#: P31941NCBI Gene ID:100913187/200315
Uniprot	P31941
GeneID	100913187;200315;
Calculated MW	26kDa
Concentration	1.0mg/mL
Formulation	Rabbit IgG in phosphate buffered saline , pH 7.4, 150mM NaCl, 0.02% sodium azide and 50% glycerol.
Storage	Store at -20°C

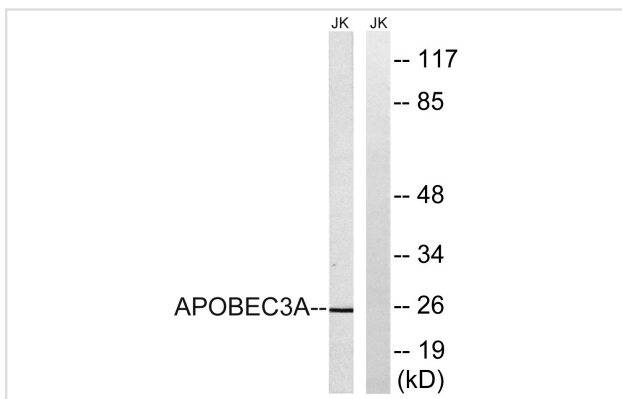
## Application Details

Western blotting: 1:1000

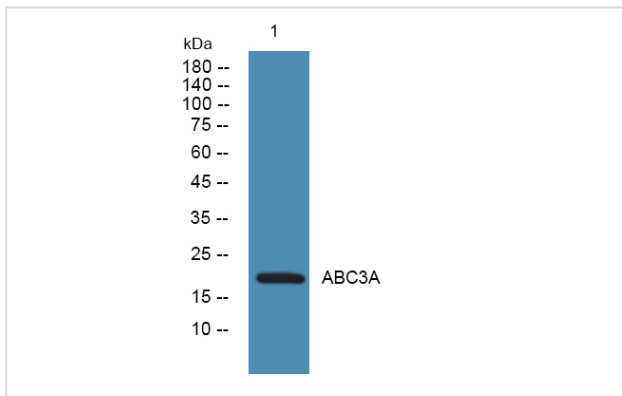
## Images



Western Blot analysis of Jurkat cells using APOBEC3A Polyclonal Antibody



Western blot analysis of lysates from Jurkat cells, using APOBEC3A Antibody. The lane on the right is blocked with the synthesized peptide.



Western blot analysis of lysates from K562 cells, primary antibody was diluted at 1:1000, 4° over night

Note: This product is for in vitro research use only