

GAS3 Antibody

Catalog No: #44328

Package Size: #44328-1 50ul #44328-2 100ul

Orders: order@signalwayantibody.com

Support: tech@signalwayantibody.com

Description

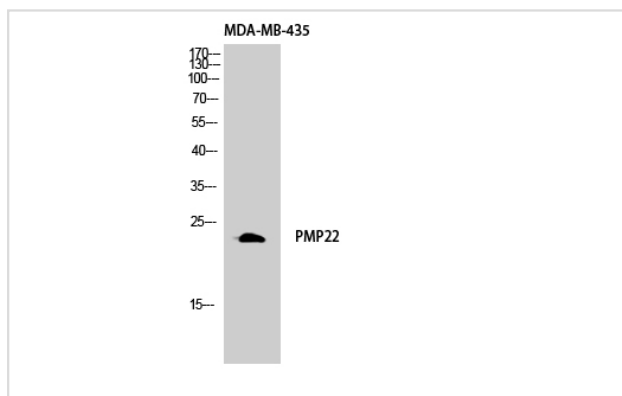
Product Name	GAS3 Antibody
Host Species	Rabbit
Clonality	Polyclonal
Purification	Immunogen affinity purified
Applications	WB IHC
Species Reactivity	Hu Ms Rt
Specificity	GAS3 Antibody detects endogenous levels of total GAS3
Immunogen Type	Peptide
Immunogen Description	A synthesized peptide derived from human GAS3
Target Name	GAS3
Other Names	PMP22, CMT1E, DSS, GAS-3, GAS3, Growth arrest-specific 3, HMSNIA, PMP-22, CMT1A, HNPP, Peripheral myelin protein 22
Accession No.	Swiss-Prot#: Q01453NCBI Gene ID:5376
Uniprot	Q01453
GeneID	5376;
Calculated MW	22kDa
Concentration	1.0mg/mL
Formulation	Rabbit IgG in phosphate buffered saline , pH 7.4, 150mM NaCl, 0.02% sodium azide and 50% glycerol.
Storage	Store at -20°C

Application Details

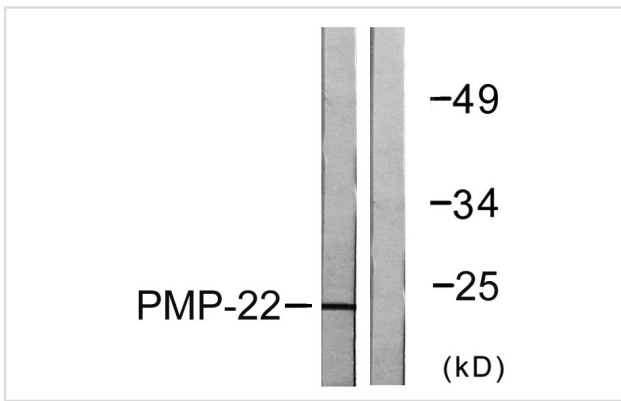
Western Blot: 1/500 - 1/2000

Immunohistochemistry: 1/100 - 1/300

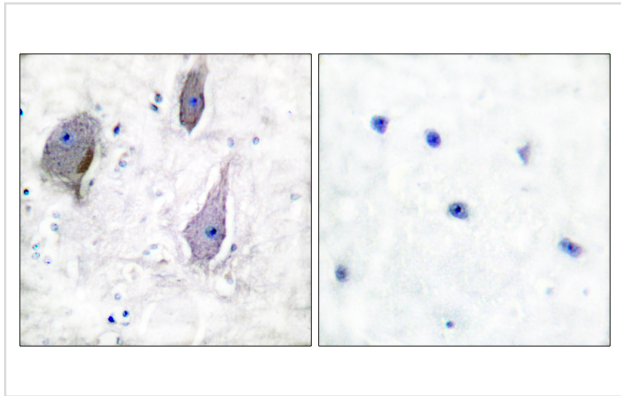
Images



Western Blot analysis of MDA-MB-435 cells using GAS3 Polyclonal Antibody diluted at 1:1000



Western blot analysis of lysates from MDA-MB-435 cells, using PMP22 Antibody. The lane on the right is blocked with the synthesized peptide.



Immunohistochemistry analysis of paraffin-embedded human brain tissue, using PMP22 Antibody. The picture on the right is blocked with the synthesized peptide.

Note: This product is for in vitro research use only