

## HRT2 Antibody

Catalog No: #44342

Package Size: #44342-1 50ul #44342-2 100ul

Orders: order@signalwayantibody.com

Support: tech@signalwayantibody.com

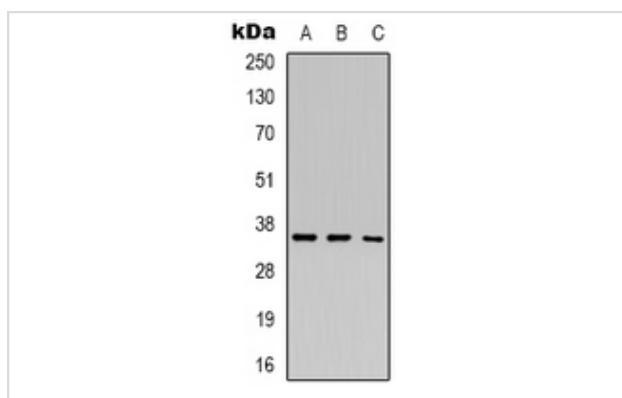
## Description

Product Name	HRT2 Antibody
Host Species	Rabbit
Clonality	Polyclonal
Purification	Immunogen affinity purified
Applications	WB
Species Reactivity	Hu Ms Rt
Specificity	HRT2 Antibody detects endogenous levels of total HRT2
Immunogen Type	Peptide
Immunogen Description	A synthesized peptide derived from human HRT2
Target Name	HRT2
Other Names	HEY2, BHLHb32, CHF1, GRIDLOCK, HHRT2, HERP, HESR2, HRT-2, HRT2, GRL, Protein gridlock homolog, HCHF1, HERP1, HESR-2
Accession No.	Swiss-Prot#: Q9UBP5NCBI Gene ID:23493
Uniprot	Q9UBP5
GeneID	23493;
Calculated MW	36kDa
Concentration	1.0mg/mL
Formulation	Rabbit IgG in phosphate buffered saline , pH 7.4, 150mM NaCl, 0.02% sodium azide and 50% glycerol.
Storage	Store at -20°C

## Application Details

Western blotting: 1:1000

## Images



Western blot analysis of HRT2 expression in A549 (A), MCF7 (B), K562 (C) whole cell lysates.

---

Note: This product is for in vitro research use only