

KIR3.1 Antibody

Catalog No: #44350

Package Size: #44350-1 50ul #44350-2 100ul

Orders: order@signalwayantibody.com

Support: tech@signalwayantibody.com

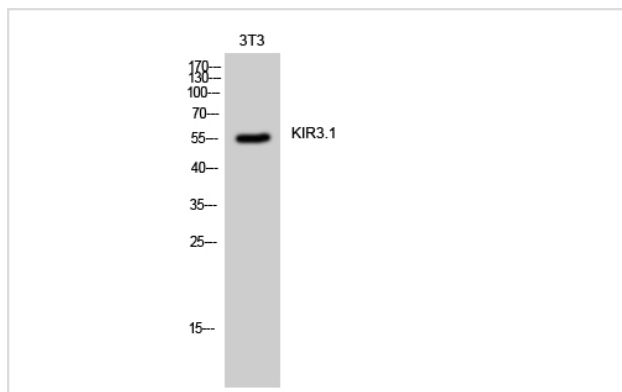
Description

Product Name	KIR3.1 Antibody
Host Species	Rabbit
Clonality	Polyclonal
Purification	Immunogen affinity purified
Applications	WB;IHC-p
Species Reactivity	Hu Rt Mouse
Specificity	KIR3.1 Antibody detects endogenous levels of total KIR3.1
Immunogen Type	Peptide
Immunogen Description	A synthesized peptide derived from human KIR3.1
Target Name	KIR3.1
Other Names	Kcnf3 antibody Kcnj3 antibody KGA antibody KGB1 antibody Kir3.1 antibody
Accession No.	Swiss-Prot#: P48549NCBI Gene ID:3760
Uniprot	P48549
GeneID	3760;
Calculated MW	43kDa
Concentration	1.0mg/mL
Formulation	Rabbit IgG in phosphate buffered saline , pH 7.4, 150mM NaCl, 0.02% sodium azide and 50% glycerol.
Storage	Store at -20°C

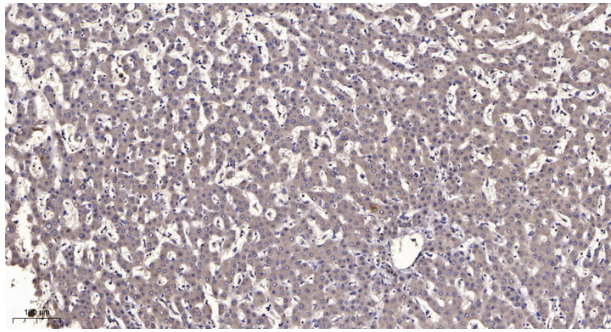
Application Details

Western blotting: 1:1000

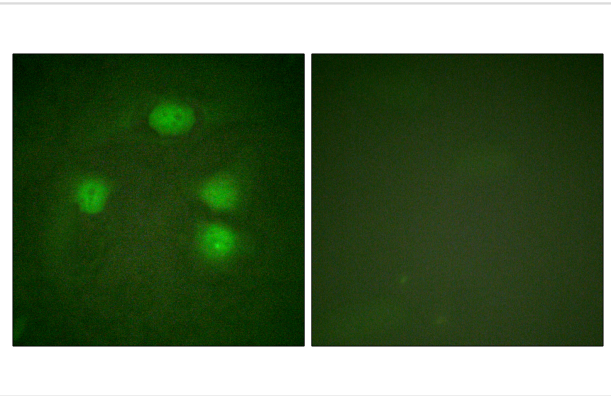
Images



Western Blot analysis of 3T3 cells using KIR3.1 Polyclonal Antibody



Immunohistochemical analysis of paraffin-embedded human liver cancer. 1, Antibody was diluted at 1:200(4° overnight). 2, Tris-EDTA,pH9.0 was used for antigen retrieval. 3,Secondary antibody was diluted at 1:200(room temperature, 45min).



Immunofluorescence analysis of HeLa cells, using GIRK1/KIR3.1/KCNJ3 Antibody. The picture on the right is blocked with the synthesized peptide.

Note: This product is for in vitro research use only