

LUC7L2 Antibody

Catalog No: #44355

Package Size: #44355-1 50ul #44355-2 100ul

Orders: order@signalwayantibody.comSupport: tech@signalwayantibody.com

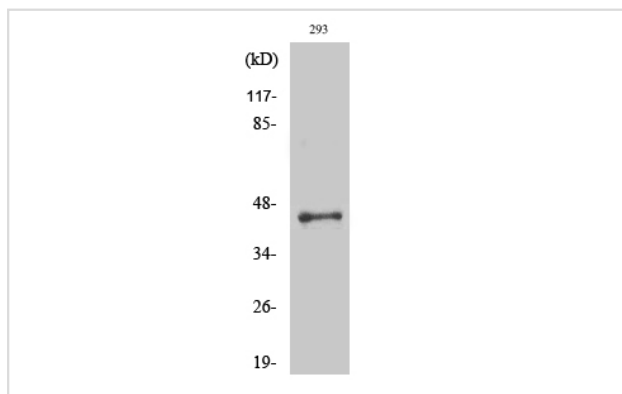
Description

Product Name	LUC7L2 Antibody
Host Species	Rabbit
Clonality	Polyclonal
Purification	Immunogen affinity purified
Applications	WB
Species Reactivity	Hu Ms
Specificity	LUC7L2 Antibody detects endogenous levels of total LUC7L2
Immunogen Type	Peptide
Immunogen Description	A synthesized peptide derived from human LUC7L2
Target Name	LUC7L2
Other Names	LUC7L2, H_NH0792N18.3, HLuc7B2, LUC7-like 2 (S. cerevisiae), LUC7B2, CGI-59, CGI-74
Accession No.	Swiss-Prot#: Q9Y383NCBI Gene ID:51631
Uniprot	Q9Y383
GeneID	51631;
Calculated MW	47kDa
Concentration	1.0mg/mL
Formulation	Liquid in PBS containing 50% glycerol, 0.5% BSA and 0.02% sodium azide.
Storage	Store at -20°C

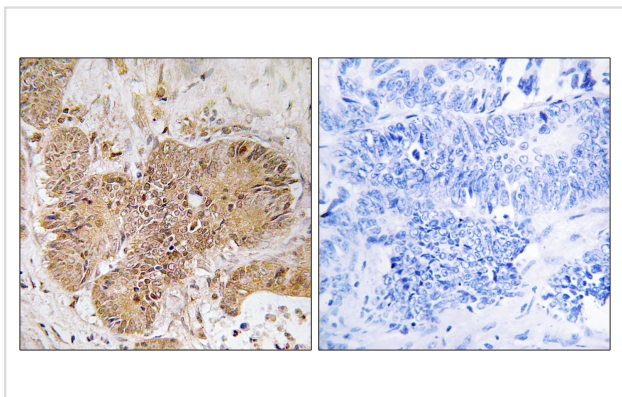
Application Details

Western blotting: 1:1000

Images



Western Blot analysis of various cells using LUC7L2 Polyclonal Antibody



Immunohistochemistry analysis of paraffin-embedded human colon carcinoma tissue, using LUC7L2 Antibody. The picture on the right is blocked with the synthesized peptide.

Note: This product is for in vitro research use only