

HSP27(Phospho-Ser15) Antibody

Catalog No: #11164

Package Size: #11164-1 50ul #11164-2 100ul

Orders: order@signalwayantibody.comSupport: tech@signalwayantibody.com

Description

Product Name	HSP27(Phospho-Ser15) Antibody
Host Species	Rabbit
Clonality	Polyclonal
Purification	Antibodies were produced by immunizing rabbits with synthetic phosphopeptide and KLH conjugates. Antibodies were purified by affinity-chromatography using epitope-specific phosphopeptide. Non-phospho specific antibodies were removed by chromatography using non-phosphopeptide.
Applications	WB IHC IF
Species Reactivity	Hu
Specificity	The antibody detects endogenous level of HSP27 only when phosphorylated at serine 15.
Immunogen Type	Peptide-KLH
Immunogen Description	Peptide sequence around phosphorylation site of serine15 (G-P-S(p)-W-D) derived from Human HSP27.
Target Name	HSP27
Modification	Phospho
Other Names	CMT2F, HMN2B, HSP27, HSP28, Hsp25
Accession No.	Swiss-Prot: P04792 NCBI Protein: NP_001531.1
Uniprot	P04792
GeneID	3315;
Concentration	1.0mg/ml
Formulation	Supplied at 1.0mg/mL in phosphate buffered saline (without Mg ²⁺ and Ca ²⁺), pH 7.4, 150mM NaCl, 0.02% sodium azide and 50% glycerol.
Storage	Store at -20°C for long term preservation (recommended). Store at 4°C for short term use.

Application Details

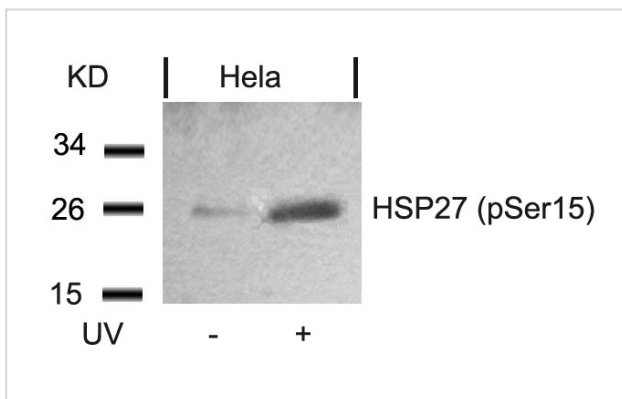
Predicted MW: 27kd

Western blotting: 1:500~1:1000

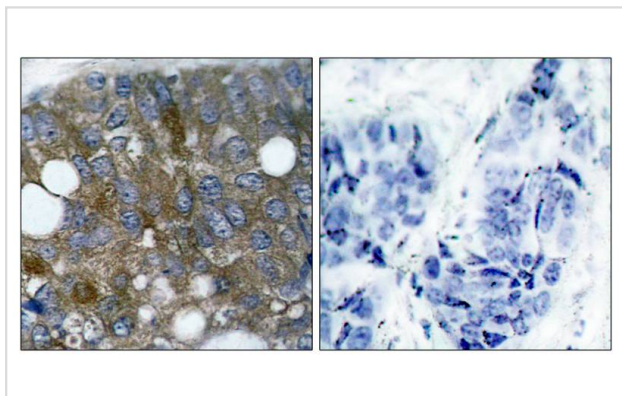
Immunohistochemistry: 1:50~1:100

Immunofluorescence: 1:100~1:200

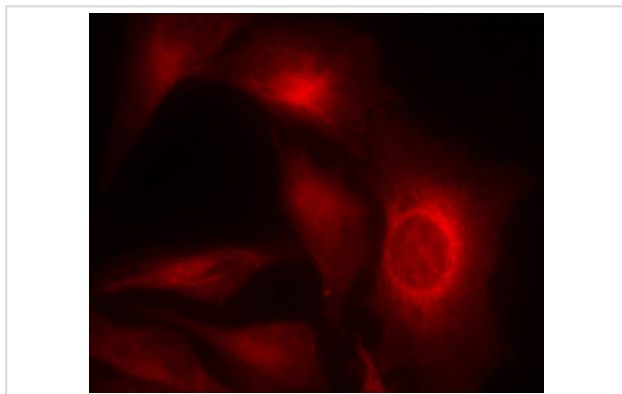
Images



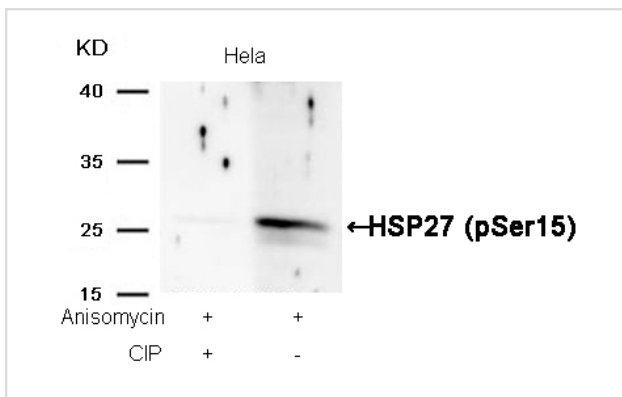
Western blot analysis of extracts from HeLa cells untreated or treated with UV using HSP27(Phospho-Ser15) Antibody #11164.



Immunohistochemical analysis of paraffin-embedded human breast carcinoma tissue using HSP27(Phospho-Ser15) Antibody #11164(left) or the same antibody preincubated with blocking peptide(right).



Immunofluorescence staining of methanol-fixed HeLa cells showing cytoplasmic staining using HSP27(Phospho-Ser15) Antibody #11164.



Western blot analysis of extracts from HeLa cells, treated with Anisomycin or calf intestinal phosphatase (CIP), using HSP27 (Phospho-Ser15) Antibody #11164.

Background

Involved in stress resistance and actin organization.

Tremolada L, et al. (2005) *Proteomics*. 5(3): 788-795.

McGregor E, et al. (2004) *Mol Cell Proteomics*. 3(2): 115-124.

Benn SC, et al. (2002) *Neuron*. 36(1): 45-56.

MacDonald JA, et al. (2002) *Mol Cell Proteomics*. 1(4): 314-322.

Note: This product is for in vitro research use only