

Photomedin-2 Antibody

Catalog No: #44390

Package Size: #44390-1 50ul #44390-2 100ul

Orders: order@signalwayantibody.com

Support: tech@signalwayantibody.com

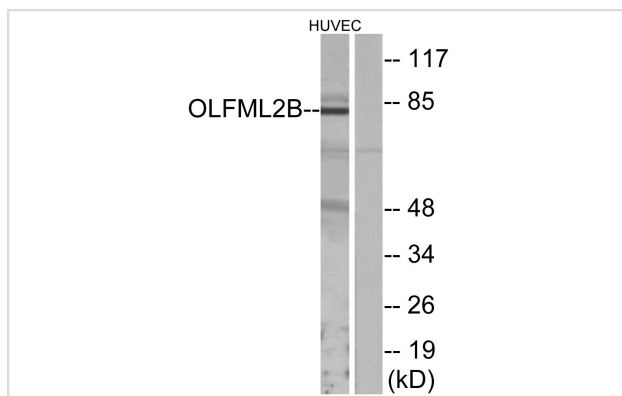
Description

Product Name	Photomedin-2 Antibody
Host Species	Rabbit
Clonality	Polyclonal
Purification	Immunogen affinity purified
Applications	WB
Species Reactivity	Hu Ms
Specificity	Photomedin-2 Antibody detects endogenous levels of total Photomedin-2
Immunogen Type	Peptide
Immunogen Description	A synthesized peptide derived from human Photomedin-2
Target Name	Photomedin-2
Other Names	OLFML2B, DKFZP586L151, Photomedin-2, RP11-227F8.1, Olfactomedin-like 2B, Olfactomedin-like protein 2B
Accession No.	Swiss-Prot#: Q68BL8NCBI Gene ID:25903
Uniprot	Q68BL8
GeneID	25903;
Calculated MW	84kDa
Concentration	1.0mg/mL
Formulation	Liquid in PBS containing 50% glycerol, 0.5% BSA and 0.02% sodium azide.
Storage	Store at -20°C

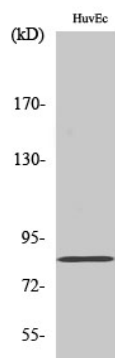
Application Details

Western blotting: 1:1000

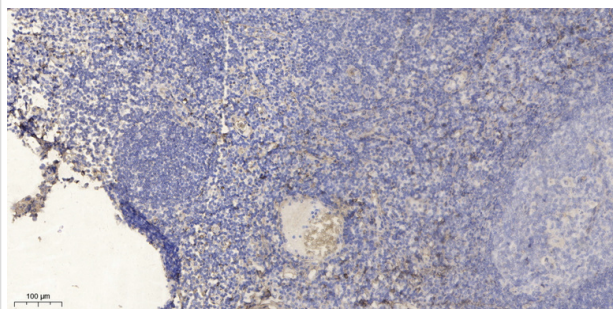
Images



Western blot analysis of lysates from HUVEC cells, using OLFML2B Antibody. The lane on the right is blocked with the synthesized peptide.



Western Blot analysis of various cells using Photomedin-2 Polyclonal Antibody



Immunohistochemical analysis of paraffin-embedded human tonsil. 1, Antibody was diluted at 1:200(4° overnight). 2, Tris-EDTA,pH9.0 was used for antigen retrieval. 3,Secondary antibody was diluted at 1:200(room temperature, 30min).

Note: This product is for in vitro research use only