

## PKAalpha/beta/gamma cat Antibody

Catalog No: #44392

Package Size: #44392-1 50ul #44392-2 100ul

Orders: order@signalwayantibody.com

Support: tech@signalwayantibody.com

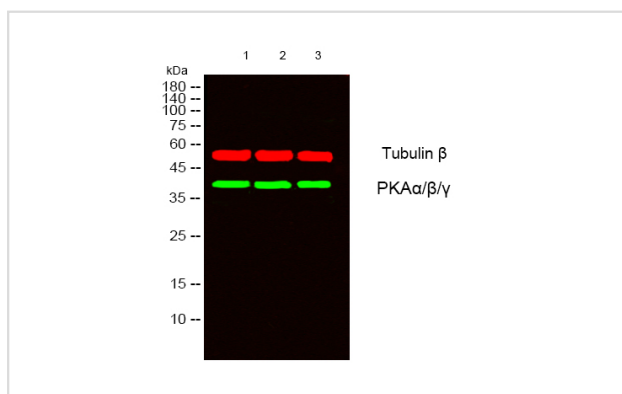
## Description

Product Name	PKAalpha/beta/gamma cat Antibody
Host Species	Rabbit
Clonality	Polyclonal
Purification	Immunogen affinity purified
Applications	WB
Species Reactivity	Hu
Specificity	PKAalpha/beta/gamma cat Antibody detects endogenous levels of total PKAalpha/beta/gamma cat
Immunogen Type	Peptide
Immunogen Description	A synthesized peptide derived from human PKAalpha/beta/gamma cat
Target Name	PKAalpha/beta/gamma cat
Other Names	PRKACA, PKA C-alpha, Pka calpha, PKACA
Accession No.	Swiss-Prot#: P17612/P22694/P22612NCBI Gene ID:5566/5567/5568
Uniprot	P17612
GeneID	5566;
Calculated MW	40kDa
Concentration	1.0mg/mL
Formulation	Liquid in PBS containing 50% glycerol, 0.5% BSA and 0.02% sodium azide.
Storage	Store at -20°C

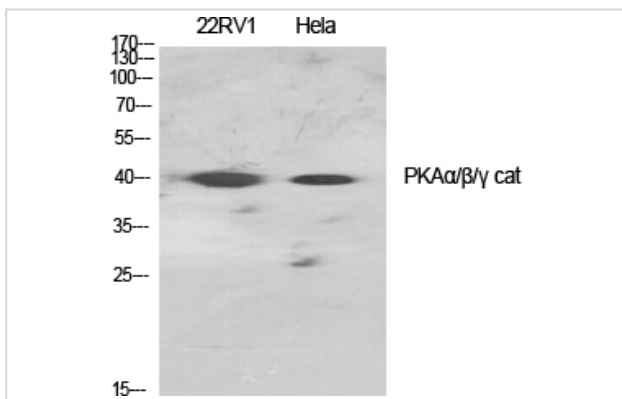
## Application Details

Western blotting: 1:1000

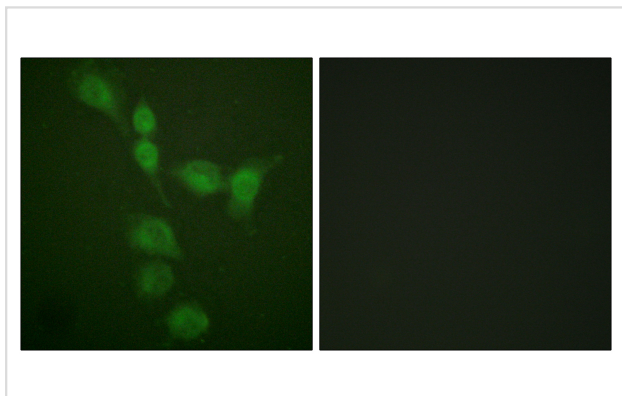
## Images



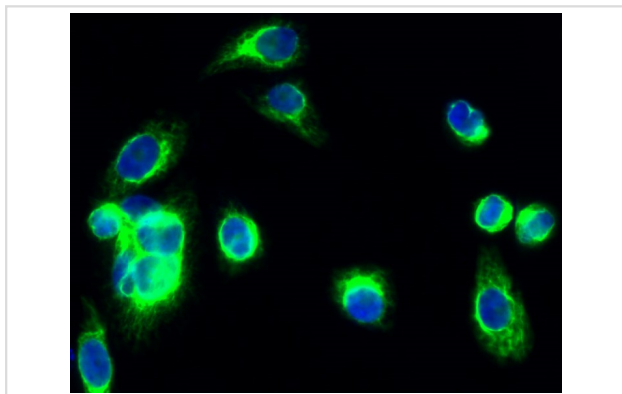
Western blot analysis of lysates from 1) 22RV1, 2) HeLa, 3) COLO205 cells, oO GreenoO primary antibody was diluted at 1:1000, 4° over night, secondary antibody(cat:RS23920) was diluted at 1:10000, 37° 1hour. oO RedoO Tubulin β Monoclonal Antibody(5G3) (cat:YM3030) antibody was diluted at 1:5000 as loading control, 4° over night, secondary antibody(cat:RS23710) was diluted at 1:10000, 37° 1hour.



Western Blot analysis of various cells using PKA $\alpha$ / $\beta$ / $\gamma$  cat Polyclonal Antibody diluted at 1:1000



Immunofluorescence analysis of A549 cells, using PKA alpha/beta CAT Antibody. The picture on the right is blocked with the synthesized peptide.



Immunofluorescence analysis of HeLa cell. 1, PKA $\alpha$ / $\beta$ / $\gamma$  cat Polyclonal Antibody (green) was diluted at 1:200 (4° overnight). 2, Goat Anti Rabbit Alexa Fluor 488 was diluted at 1:1000 (room temperature, 50min). 3 DAPI (blue) 10min.

Note: This product is for in vitro research use only