

## UBE2G1 Antibody

Catalog No: #44439

Package Size: #44439-1 50ul #44439-2 100ul

Orders: order@signalwayantibody.com

Support: tech@signalwayantibody.com

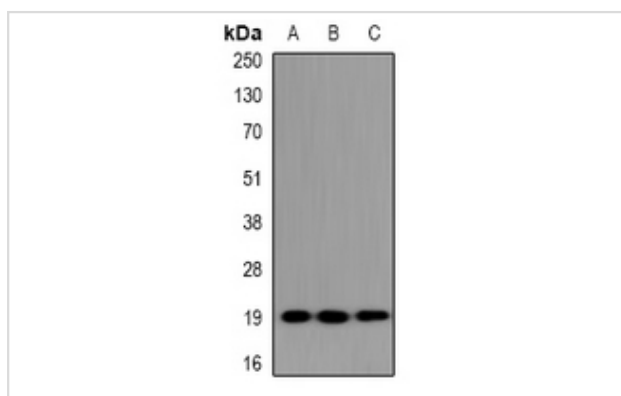
## Description

Product Name	UBE2G1 Antibody
Host Species	Rabbit
Clonality	Polyclonal
Purification	Immunogen affinity purified
Applications	WB, IH
Species Reactivity	Hu Ms Rt
Specificity	UBE2G1 Antibody detects endogenous levels of total UBE2G1
Immunogen Type	Peptide
Immunogen Description	A synthesized peptide derived from human UBE2G1
Target Name	UBE2G1
Other Names	UBE2G1, UBC7, UBE2G, Ubiquitin carrier protein G1, Ubiquitin-protein ligase G1, E217K
Accession No.	Swiss-Prot#: P62253NCBI Gene ID:7326
Uniprot	P62253
GeneID	7326;
Calculated MW	20 kDa
Concentration	1.0mg/mL
Formulation	Liquid in 0.42% Potassium phosphate, 0.87% Sodium chloride, pH 7.3, 30% glycerol, and 0.01% sodium azide.
Storage	Store at -20°C

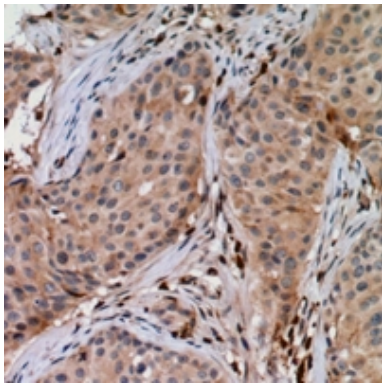
## Application Details

WB (1/500 - 1/2000), IH (1/50 - 1/200)

## Images



Western blot analysis of UBE2G1 expression in HeLa (A), NIH3T3 (B), H9C2 (C) whole cell lysates.



Immunohistochemical analysis of UBE2G1 staining in human breast cancer formalin fixed paraffin embedded tissue section. The section was pre-treated using heat mediated antigen retrieval with sodium citrate buffer (pH 6.0). The section was then incubated with the antibody at room temperature and detected using an HRP conjugated compact polymer system. DAB was used as the chromogen. The section was then counterstained with haematoxylin and mounted with DPX.

---

Note: This product is for in vitro research use only