

CD164L2 Antibody

Catalog No: #44455

Package Size: #44455-1 50ul #44455-2 100ul

Orders: order@signalwayantibody.com

Support: tech@signalwayantibody.com

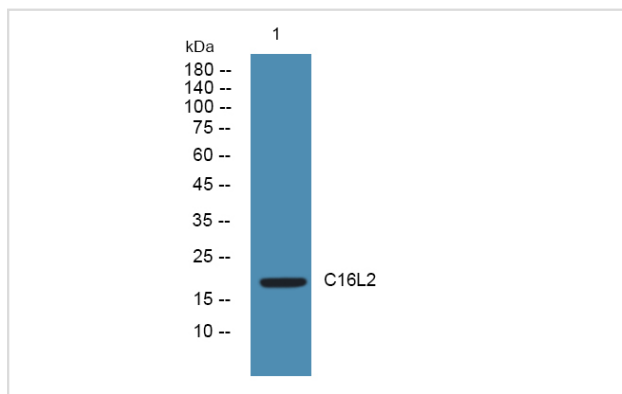
Description

Product Name	CD164L2 Antibody
Host Species	Rabbit
Clonality	Polyclonal
Purification	Immunogen affinity purified
Applications	WB
Species Reactivity	Hu
Specificity	CD164L2 Antibody detects endogenous levels of total CD164L2
Immunogen Type	Peptide
Immunogen Description	A synthesized peptide derived from human CD164L2
Target Name	CD164L2
Other Names	CD164 sialomucin-like 2 protein
Accession No.	Swiss-Prot#: Q6UWJ8NCBI Gene ID:388611
Uniprot	Q6UWJ8
GeneID	388611;
Calculated MW	19 kDa
Concentration	1.0mg/mL
Formulation	Liquid in PBS containing 50% glycerol, and 0.02% sodium azide.
Storage	Store at -20°C

Application Details

Western blotting: 1:1000-3000

Images



Note: This product is for in vitro research use only