

# PAK1/PAK2/PAK3(Phospho-Thr423/Thr402/Thr421) Antibody

Catalog No: #11165

Orders: [order@signalwayantibody.com](mailto:order@signalwayantibody.com)

Package Size: #11165-1 50ul #11165-2 100ul

Support: [tech@signalwayantibody.com](mailto:tech@signalwayantibody.com)

## Description

Product Name	PAK1/PAK2/PAK3(Phospho-Thr423/Thr402/Thr421) Antibody
Host Species	Rabbit
Clonality	Polyclonal
Purification	Antibodies were produced by immunizing rabbits with synthetic phosphopeptide and KLH conjugates. Antibodies were purified by affinity-chromatography using epitope-specific phosphopeptide. Non-phospho specific antibodies were removed by chromatography using non-phosphopeptide.
Applications	IHC IF
Species Reactivity	Hu Ms Rt
Specificity	The Antibody detects endogenous level of PAK1/PAK2/PAK3 only when phosphorylated at threonine 423/402/421.
Immunogen Type	Peptide-KLH
Immunogen Description	Peptide sequence around phosphorylation site of threonine 423 /402/421 (R-S-T(p)-M-V) derived from Human PAK1/PAK2/PAK3.
Target Name	PAK1/PAK2/PAK3
Modification	Phospho
Other Names	p21-activated kinase 1; PAK-1; p65-PAK; Alpha-PAK;
Accession No.	Swiss-Prot:Q13153Gene ID:5058
Uniprot	Q13153
GeneID	5058;
Concentration	1.0mg/ml
Formulation	Supplied at 1.0mg/mL in phosphate buffered saline (without Mg <sup>2+</sup> and Ca <sup>2+</sup> ), pH 7.4, 150mM NaCl, 0.02% sodium azide and 50% glycerol.
Storage	Store at -20°C for long term preservation (recommended). Store at 4°C for short term use.

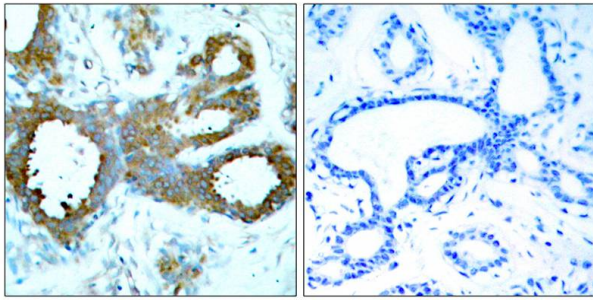
## Application Details

Predicted MW: 61-67 (PAK2) 68-74 (PAK1/3)kd

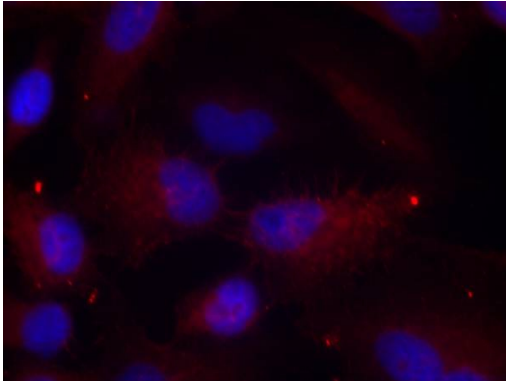
Immunohistochemistry: 1:50~1:100

Immunofluorescence: 1:100~1:200

## Images



Immunohistochemical analysis of paraffin-embedded human breast carcinoma tissue using PAK1/PAK2/PAK3(Phospho-Thr423/Thr402/Thr421) Antibody #11165(left) or the same antibody preincubated with blocking peptide(right).



Immunofluorescence staining of methanol-fixed HeLa cells using PAK1/PAK2/PAK3(Phospho-Thr423/Thr402/Thr421) Antibody #11165.

## Background

The activated kinase acts on a variety of targets. Likely to be the GTPase effector that links the Rho-related GTPases to the JNK MAP kinase pathway. Activated by CDC42 and RAC1. Involved in dissolution of stress fibers and reorganization of focal complexes. Involved in regulation of microtubule biogenesis through phosphorylation of TBCB. Activity is inhibited in cells undergoing apoptosis, potentially due to binding of CDC2L1 and CDC2L2.

Parsons M, et al. (2005) Mol Cell Biol ; 25:1680-1695.

Jung JH, et al. (2005) J Biol Chem; 280:40025-40031.

Lampugnani MG, et al. (2002) Mol Biol Cell ; 13: 1175-1189

Wang RA, et al. (2002) EMBO J; 21: 5437 - 5447.

Note: This product is for in vitro research use only