

ASPM Antibody

Catalog No: #44490

Package Size: #44490-1 50ul #44490-2 100ul

Orders: order@signalwayantibody.com

Support: tech@signalwayantibody.com

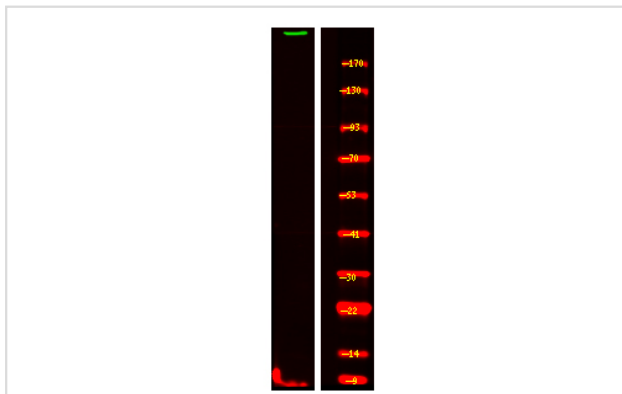
Description

Product Name	ASPM Antibody
Host Species	Rabbit
Clonality	Polyclonal
Purification	Immunogen affinity purified
Applications	WB
Species Reactivity	Hu
Specificity	ASPM Antibody detects endogenous levels of total ASPM
Immunogen Type	Peptide
Immunogen Description	A synthesized peptide derived from human ASPM
Target Name	ASPM
Other Names	ASPM, Asp homolog, Calmbp1, MCPH5, ASP
Accession No.	Swiss-Prot#: Q8IZT6NCBI Gene ID:259266
Uniprot	Q8IZT6
GeneID	259266;
Calculated MW	410 kDa
Concentration	1.0mg/mL
Formulation	Liquid in PBS containing 50% glycerol, and 0.02% sodium azide.
Storage	Store at -20°C

Application Details

Western blotting: 1:1000-3000

Images



Western Blot analysis of lysates of K-562 cell, using primary antibody at 1:1000 dilution.

Note: This product is for in vitro research use only