

COX7A1 Antibody

Catalog No: #44512

Package Size: #44512-1 50ul #44512-2 100ul

Orders: order@signalwayantibody.com

Support: tech@signalwayantibody.com

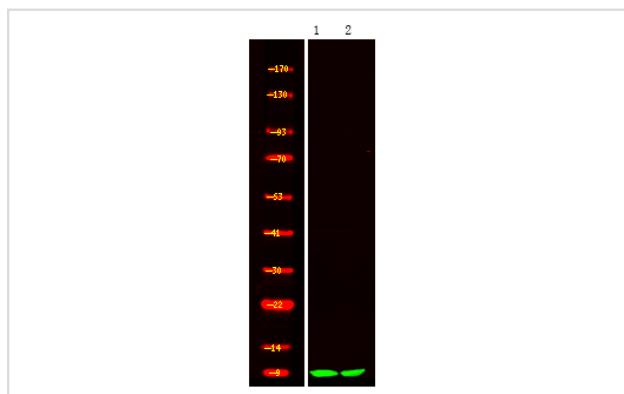
Description

Product Name	COX7A1 Antibody
Host Species	Rabbit
Clonality	Polyclonal
Purification	Immunogen affinity purified
Applications	WB
Species Reactivity	Hu
Specificity	COX7A1 Antibody detects endogenous levels of total COX7A1
Immunogen Type	Peptide
Immunogen Description	A synthesized peptide derived from human COX7A1
Target Name	COX7A1
Other Names	COX7A1, COX7A, COX7AH, COX7AM
Accession No.	Swiss-Prot#: P24310NCBI Gene ID:1346
Uniprot	P24310
GeneID	1346;
Calculated MW	9 kDa
Concentration	1.0mg/mL
Formulation	Rabbit IgG in phosphate buffered saline , pH 7.4, 150mM NaCl, 0.02% sodium azide and 50% glycerol.
Storage	Store at -20°C

Application Details

Western blotting: 1:1000-3000

Images



Western Blot analysis of lysates of 1. mouse heart and 2. rat heart, using primary antibody at 1:1000 dilution.

Note: This product is for in vitro research use only