

EMID2 Antibody

Catalog No: #44513

Package Size: #44513-1 50ul #44513-2 100ul

Orders: order@signalwayantibody.com

Support: tech@signalwayantibody.com

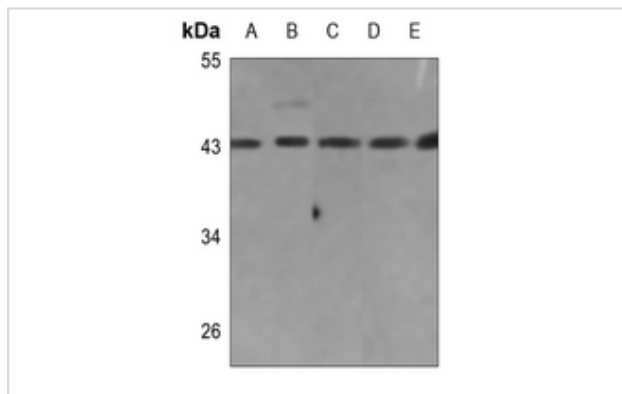
Description

Product Name	EMID2 Antibody
Host Species	Rabbit
Clonality	Polyclonal
Purification	Immunogen affinity purified
Applications	WB
Species Reactivity	Hu Ms
Specificity	EMID2 Antibody detects endogenous levels of total EMID2
Immunogen Type	Peptide
Immunogen Description	A synthesized peptide derived from human EMID2
Target Name	EMID2
Other Names	EMID2, COL26A1, Collagen alpha-1(XXVI) chain, Collagen, type XXVI, alpha 1, EMI6, EMI domain containing 2, KIAA1299, Putative emu2, EMU2, SH2B
Accession No.	Swiss-Prot#: Q96A83NCBI Gene ID:136227
Uniprot	Q96A83
GeneID	136227;
Calculated MW	45 kDa
Concentration	1.0mg/mL
Formulation	Liquid in 0.42% Potassium phosphate, 0.87% Sodium chloride, pH 7.3, 30% glycerol, and 0.01% sodium azide.
Storage	Store at -20°C

Application Details

Western blotting: 1:1000-3000

Images



Western blot analysis of EMID2 expression in HEK293T (A), A549 (B), mouse kidney (C), rat kidney (D), rat liver (E) whole cell lysates.

Note: This product is for in vitro research use only