

SMARCD1/3 Antibody

Catalog No: #44530

Package Size: #44530-1 50ul #44530-2 100ul

Orders: order@signalwayantibody.com

Support: tech@signalwayantibody.com

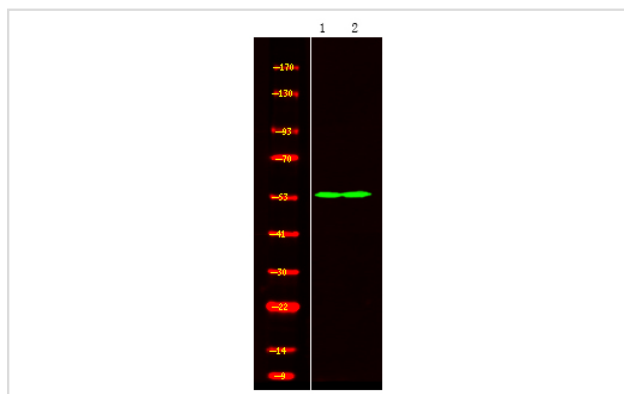
Description

Product Name	SMARCD1/3 Antibody
Host Species	Rabbit
Clonality	Polyclonal
Purification	Immunogen affinity purified
Applications	WB
Species Reactivity	Hu Ms
Specificity	SMARCD1/3 Antibody detects endogenous levels of total SMARCD1/3
Immunogen Type	Peptide
Immunogen Description	A synthesized peptide derived from human SMARCD1/3
Target Name	SMARCD1/3
Other Names	BAF60A BAF60C
Accession No.	Swiss-Prot#: Q96GM5/Q6STE5NCBI Gene ID:6602/6604
Uniprot	Q96GM5
GeneID	6602;
Calculated MW	58 kDa
Concentration	1.0mg/mL
Formulation	Rabbit IgG in phosphate buffered saline , pH 7.4, 150mM NaCl, 0.02% sodium azide and 50% glycerol.
Storage	Store at -20°C

Application Details

Western blotting: 1:1000-3000

Images



Western Blot analysis of lysates of 1. mouse brain and 2. Jurkat cell, using primary antibody at 1:1000 dilution.

Note: This product is for in vitro research use only