

## Cytochrome P450 4Z1/2 Antibody

Catalog No: #44533

Package Size: #44533-1 50ul #44533-2 100ul

Orders: order@signalwayantibody.com

Support: tech@signalwayantibody.com

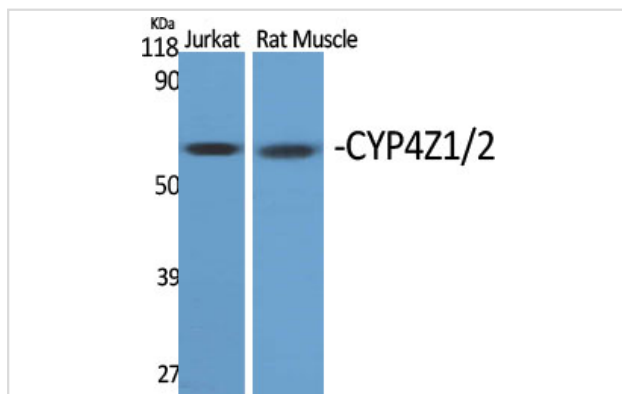
## Description

Product Name	Cytochrome P450 4Z1/2 Antibody
Host Species	Rabbit
Clonality	Polyclonal
Purification	Immunogen affinity purified
Applications	WB
Species Reactivity	Hu
Specificity	Cytochrome P450 4Z1/2 Antibody detects endogenous levels of total Cytochrome P450 4Z1/2
Immunogen Type	Peptide
Immunogen Description	A synthesized peptide derived from human Cytochrome P450 4Z1/2
Target Name	Cytochrome P450 4Z1/2
Other Names	CYP4Z2P
Accession No.	Swiss-Prot#: Q5VVE4/Q8N1L4NCBI Gene ID:199974/163720
Uniprot	Q5VVE4
GeneID	199974;163720;
Calculated MW	40 kDa
Concentration	1.0mg/mL
Formulation	Liquid in PBS containing 50% glycerol, 0.5% BSA and 0.02% sodium azide.
Storage	Store at -20°C

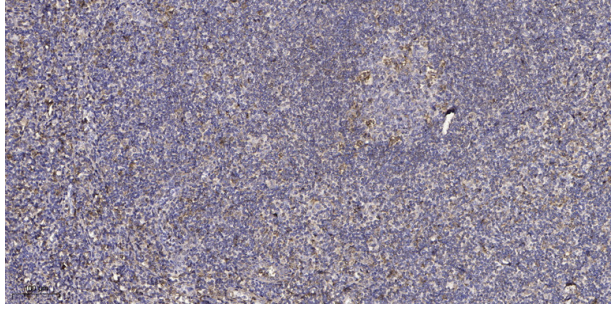
## Application Details

Western blotting: 1:1000-3000

## Images



Western Blot analysis of various cells using CYP4Z1/2 Polyclonal Antibody



Immunohistochemical analysis of paraffin-embedded human tonsil. 1, Antibody was diluted at 1:200(4° overnight). 2, Tris-EDTA,pH9.0 was used for antigen retrieval. 3,Secondary antibody was diluted at 1:200(room temperature, 30min).

---

Note: This product is for in vitro research use only