

CXCL17 Antibody

Catalog No: #44555

Package Size: #44555-1 50ul #44555-2 100ul

Orders: order@signalwayantibody.com

Support: tech@signalwayantibody.com

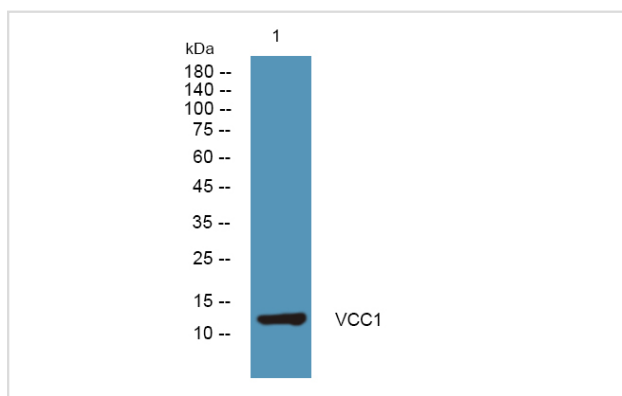
Description

Product Name	CXCL17 Antibody
Host Species	Rabbit
Clonality	Polyclonal
Purification	Immunogen affinity purified
Applications	WB
Species Reactivity	Hu
Specificity	CXCL17 Antibody detects endogenous levels of total CXCL17
Immunogen Type	Peptide
Immunogen Description	A synthesized peptide derived from human CXCL17
Target Name	CXCL17
Other Names	CXCL17, DMC, Dcip1, UNQ473, VCC-1, VCC1, C-X-C motif chemokine 17, VEGF co-regulated chemokine 1
Accession No.	Swiss-Prot#: Q6UXB2NCBI Gene ID:284340
Uniprot	Q6UXB2
GeneID	284340;
Calculated MW	14 kDa
Concentration	1.0mg/mL
Formulation	Rabbit IgG in phosphate buffered saline , pH 7.4, 150mM NaCl, 0.02% sodium azide and 50% glycerol.
Storage	Store at -20°C

Application Details

Western blotting: 1:1000-3000

Images



Western blot analysis of lysates from KB cells, primary antibody was diluted at 1:1000, 4° over night

Note: This product is for in vitro research use only