

## P2RY5 Antibody

Catalog No: #44617

Package Size: #44617-1 50ul #44617-2 100ul

Orders: order@signalwayantibody.com

Support: tech@signalwayantibody.com

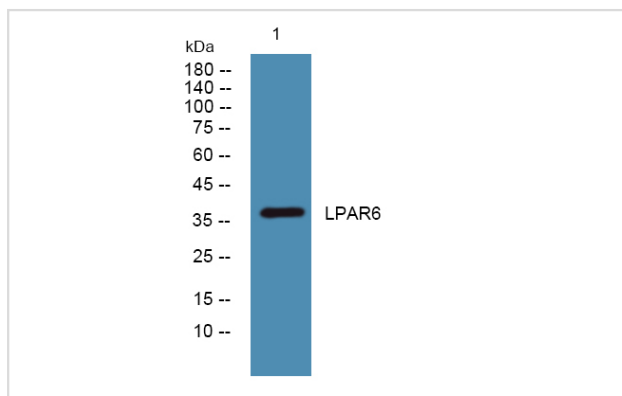
## Description

Product Name	P2RY5 Antibody
Host Species	Rabbit
Clonality	Polyclonal
Purification	Immunogen affinity purified
Applications	WB
Species Reactivity	Hu Ms Rt
Specificity	P2RY5 Antibody detects endogenous levels of total P2RY5
Immunogen Type	Peptide
Immunogen Description	A synthesized peptide derived from human P2RY5
Target Name	P2RY5
Other Names	LPAR6, ARWH1, LAH3, LPA receptor 6, LPA-6, p2RY5, p2Y5, Purinergic receptor 5, Purinergic receptor p2y5, p2Y purinoceptor 5
Accession No.	Swiss-Prot#: P43657NCBI Gene ID:10161
Uniprot	P43657
GeneID	10161;
Calculated MW	39 kDa
Concentration	1.0mg/mL
Formulation	Rabbit IgG in phosphate buffered saline , pH 7.4, 150mM NaCl, 0.02% sodium azide and 50% glycerol.
Storage	Store at -20°C

## Application Details

Western blotting: 1:1000-3000

## Images



Western blot analysis of lysates from U2OS cells, primary antibody was diluted at 1:1000, 4° over night

---

Note: This product is for in vitro research use only