

## P2RY10 Antibody

Catalog No: #44619

Package Size: #44619-1 50ul #44619-2 100ul

Orders: order@signalwayantibody.com

Support: tech@signalwayantibody.com

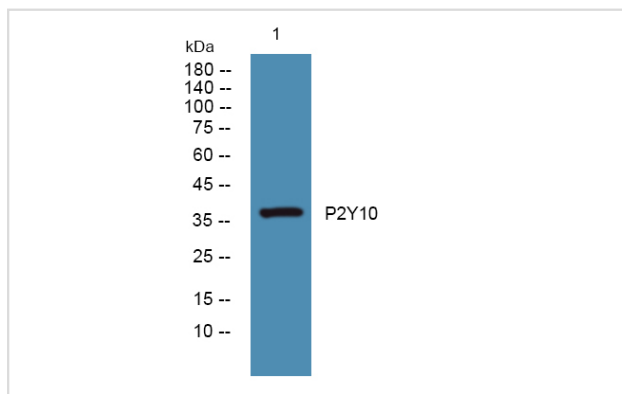
## Description

Product Name	P2RY10 Antibody
Host Species	Rabbit
Clonality	Polyclonal
Purification	Immunogen affinity purified
Applications	WB
Species Reactivity	Hu Ms Rt
Specificity	P2RY10 Antibody detects endogenous levels of total P2RY10
Immunogen Type	Peptide
Immunogen Description	A synthesized peptide derived from human P2RY10
Target Name	P2RY10
Other Names	P2RY10, p2RY10, p2Y-like receptor, Putative P2Y purinoceptor 10, p2Y purinoceptor 10, p2Y10
Accession No.	Swiss-Prot#: O00398NCBI Gene ID:27334
Uniprot	O00398
GeneID	27334;
Calculated MW	39 kDa
Concentration	1.0mg/mL
Formulation	Liquid in PBS containing 50% glycerol, and 0.02% sodium azide.
Storage	Store at -20°C

## Application Details

Western blotting: 1:1000-3000

## Images



---

Note: This product is for in vitro research use only